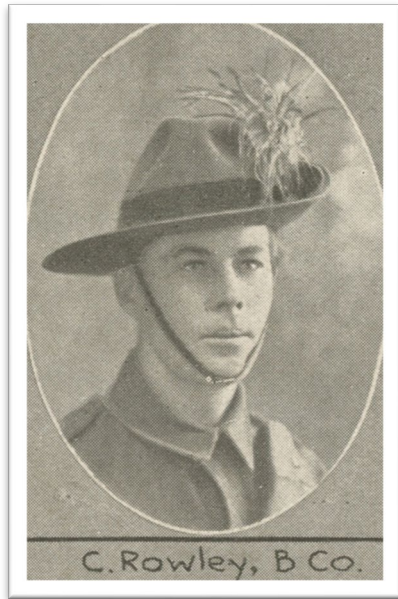


## ROWLEY, Charles



C. Rowley B Co., one of the soldiers photographed in *The Queenslander Pictorial*, supplement to *The Queenslander*, 1914. (2014). John Oxley Library, State Library of Queensland.

Rank: Private

Service Number: 266

Unit: 5<sup>th</sup> Light Horse Regiment; 2<sup>nd</sup> Light Horse Regiment

Place of Birth: Launceston, Tasmania

Date of Birth: 16 October 1892

Enlisted at Gladstone, Qld, on 22 October 1914, aged 22 years months. Next-of-kin was father, William Rowley, Turners Marsh, Launceston, Tasmania.

On enlistment he was 5 ft 8 inches and weighed 140 lbs. His chest measurement was 33.5-37.5 inches. His occupation was cab driver, Turners Marsh, Launceston, Tasmania. Unit embarked from Sydney, NSW, on board Transport A34 *Persic* on 21 December 1914. Served in Gallipoli. Embarked from England September 1915. Discharged in consequence of being illegally absent at Cape Town from 8 April 1917 to 21 July 1920. Married while overseas. Claimed to be caring for his sick wife during his absence. All medals forfeited. Died Launceston, Tasmania, 11 May 1974, aged 81 years.

Service Record: [View digital copy \(naa.gov.au\)](https://naa.gov.au)

*Paulette Flint, 2024*