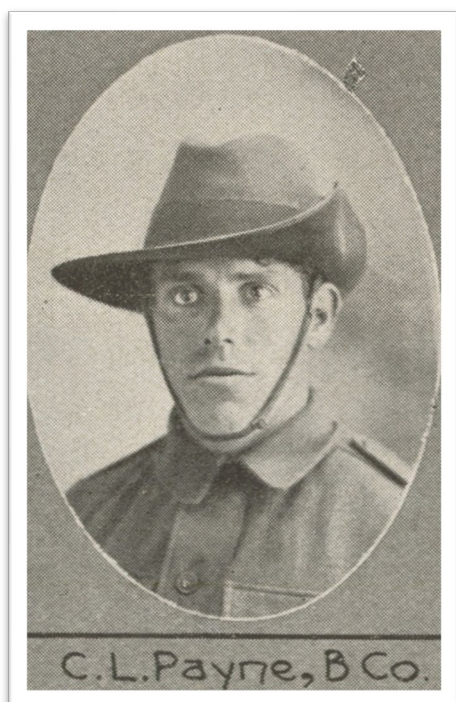


## PAYNE, Charles Lyndon



C.L. Payne B. Co., one of the soldiers photographed in *The Queenslander Pictorial*, supplement to *The Queenslander*, 1914. (2014). John Oxley Library, State Library of Queensland.

Rank: Private

Service Number: 8625

Unit: Depot Unit of Supply 3; 1<sup>st</sup> Division Train.

Place of Birth: London, England

Date of Birth: c. 1891

Enlisted at Brisbane, Qld, on 1 October 1916, aged 24 years. Next-of-kin was wife, Ellen Elizabeth Payne, Balaclava Street, North Rockhampton, Qld.

On enlistment he was 5 feet 4 inches and weighed 130lbs. His chest measurement was 33.5-35.5 inches. His occupation was butcher. Served previously in 7<sup>th</sup> Battalion Royal Fusiliers. Discharged at wife's request due to illness. Unit embarked from Sydney, NSW, on board RMS *Mooltan* on 11 December 1915. Served Cairo, then France. Admitted Hospital with Septic Ulcer 15 March 1916. Returned to Australia 1 August 1919 on *Argylshire*. Discharged 16 November 1919.

Service Record: [View digital copy \(naa.gov.au\)](#)

*Paulette Flint, 2024*