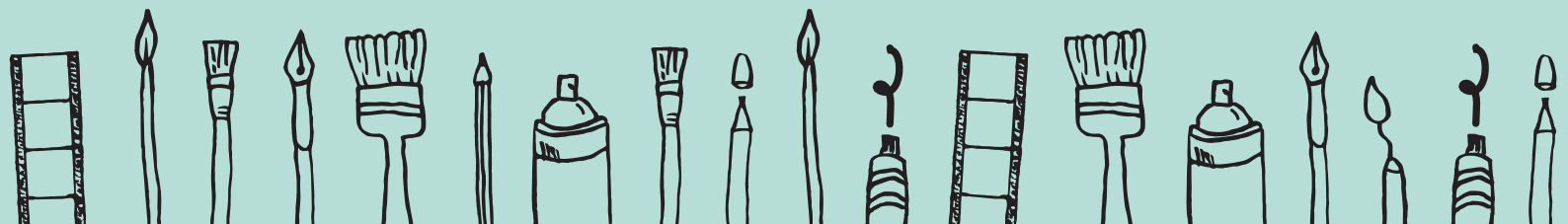




The 41st **RioTinto** Martin Hanson Memorial Art Awards **2016**

EXHIBITION CATALOGUE | 15 OCTOBER - 8 DECEMBER

MANY OF THE ENTRIES ARE FOR SALE, ENQUIRE AT FRONT DESK FOR PRICE LIST



RioTinto

ANDERSONS
AUTOCITY.COM.AU

**QUEENSLAND ALUMINA
LIMITED**

**Gladstone Area
Water Board**

**AUSTRALIA
PACIFIC
LNG**

Operated by
ConocoPhillips

GPC
Gladstone Ports Corporation
Growth. Prosperity. Community.

McDonald's

MULTITRADE
BUILDING HIRE

**ELIZABETH &
LEO ZUSSINO**

**GAIL
SELLERS**

**CHRISTIAN
THOMSEN**

**THE BUSH
FAMILY**

SWIFT

CQ
university
AUSTRALIA

**Gladstone
Picture
Framing**

**JEFF
SPANN**

QOR

**Creative
Gladstone
Region Inc.**

**Crow
Street
Creative**

**LAUREN
TKACIK**

**GLADSTONE
REGIONAL COUNCIL**
A community cultural initiative of the Gladstone Regional Council

**GLADSTONE REGIONAL
art gallery
museum**

GLADSTONE REGIONAL ART GALLERY & MUSEUM
FREE ADMISSION | Open 10am - 5pm, Monday to Saturday
Corner Goondoon & Bramston Streets, Gladstone QLD 4680
gragm.qld.gov.au | 4976 6766 | gragm@gladstonerc.qld.gov.au

The 2016 Judge Jason Smith



Photographer: Reg Ryan

JASON SMITH is the Director of Geelong Gallery, one of Australia's oldest and most important regional galleries. He was previously Curatorial Manager of Australian Art at the Queensland Art Gallery | Gallery of Modern Art. Between 2008 and 2014 Jason was Director and CEO of Heide Museum of Modern Art, one of Australia's most important cultural institutions, where he led the acclaimed reinvigoration of the Museum's artistic program. Previously he was Director of Monash Gallery of Art, which holds an outstanding collection of Australian photography.

Between 1997 and 2007 Jason was Curator of Contemporary Art at the National Gallery of Victoria, where he worked closely with many leading Australian and international artists. He has curated over 40 solo, group and thematic exhibitions including major retrospectives of the works of Howard Arkley, Peter Booth, Louise Bourgeois, Gwyn Hanssen Pigott, Stephen Benwell and Kathy Temin. He has written on the works of more than 150 artists for a range of publications.

The 41st Rio Tinto Martin Hanson Memorial Art Awards 2016

Section 1: Easel Paintings Mixed media, acrylic, collage, oil, print etc., on non-paper based supports, e.g. canvas, masonite etc.

| NAME | | TITLE | MEDIUM | SIZE (H x W mm) |
|-------------|---------------|--|---------------------------------|------------------------|
| Nethmini | Alahakoon | <i>Warm Sunset</i> | acrylic on canvas | 300 x 300 |
| Jeanette | Albury | <i>After the Rain</i> | acrylic on canvas | 510 x 600 |
| David | Allen | <i>Racines Nues</i> | oil on canvas | 760 x 760 |
| David | Allen | <i>Astral Clouds</i> | oil on canvas | 760 x 510 |
| Rosemary | Anderson | <i>Tide's Out - Wild Cattle Creek</i> | mixed media on canvas | 1220 x 915 |
| David | Baade | <i>Homeward Bound</i> | oil on canvas | 510 x 710 |
| David | Baade | <i>Caring For His Mate</i> | oil on canvas | 510 x 710 |
| Linda | Bailey | <i>Eco Struggle</i> | mixed media on board | 670 x 1530 |
| Clinton | Barker | <i>Dynamo</i> | oil on canvas | 1090 x 730 |
| Tina | Barron | <i>Steam</i> | acrylic on canvas | 605 x 505 |
| Tracey | Bartlett | <i>Our Great Barrier Reef</i> | acrylic on canvas | 1220 x 1210 |
| Carmen | Beezley-Drake | <i>The Wattle Tree</i> | acrylic on canvas | 810 x 1050 |
| Jan | Breckwoldt | <i>THERE'S TREASURE IN THEM SEAS</i> | oil on canvas | 1100 x 600 |
| Leanne | Brooker | <i>Mayor Matt</i> | acrylic on canvas | 990 x 740 |
| Leanne | Brooker | <i>Missy</i> | acrylic on canvas | 770 x 610 |
| Rhonda | Bryars | <i>Waiting for the Rain</i> | acrylic on canvas | 1220 x 915 |
| Jacqueline | Burchill | <i>Bottle Tree</i> | mixed media on canvas | 1000 x 750 |
| Jessica | Butler | <i>Hidden Beauty</i> | acrylic on board | 800 x 400 |
| Lera | Bykova | <i>Shades of Pink</i> | oil on canvas | 1000 x 1000 |
| Diana | Carey | <i>Barman Barry</i> | mixed media on canvas | 915 x 610 |
| Robyn | Cartner | <i>Patterns of the Tropics</i> | silk paint on silk | 440 x 290 |
| Robyn | Cartner | <i>Colours of the Tropics</i> | silk paint on silk | 440 x 290 |
| Andrea | Chapman | <i>A Passion for the Past</i> | oil on linen | 1140 x 1400 |
| Vanessa | Christi | <i>M3</i> | oil and gold leaf on canvas | 410 x 310 |
| Lynn | Clifford | <i>Urban cyclist</i> | acrylic on canvas | 740 x 905 |
| Denise | Cobb | <i>Piesang Asseblief (Banana Please)</i> | mixed media on canvas | 450 x 600 |
| Denise | Cobb | <i>Township</i> | mixed media on canvas | 610 x 760 |
| Christa | Coetzee | <i>In Translation</i> | mixed media on canvas | 1500 x 1420 |
| Blair | Coffey | <i>Conquest</i> | screen print on foil insulation | 1350 x 1650 |
| Brenda | Collier Hill | <i>External Rockscape I</i> | acrylic on canvas | 610 x 610 |
| Brenda | Collier Hill | <i>External Landscape II</i> | acrylic on canvas | 610 x 610 |
| Andrew | Cook | <i>En Egypte Pt. 2</i> | acrylic on canvas | 610 x 1530 |
| Andrew | Cook | <i>Burleigh Rocks</i> | acrylic on canvas | 350 x 455 |
| Garry | Darr | <i>Morocca Memories</i> | acrylic on canvas | 620 x 500 |
| Garry | Darr | <i>Hello There</i> | acrylic on canvas | 500 x 390 |
| Diana | Davey | <i>HARD YACCA: BLACK LUNG</i> | mixed media on canvas | 760 x 1000 |
| Charlotte | De Clercq | <i>Dark Innocence</i> | acrylic on canvas | 1220 x 910 |

The 41st Rio Tinto Martin Hanson Memorial Art Awards 2016

| NAME | | TITLE | MEDIUM | SIZE (H x W mm) |
|--------------|--------------|--------------------------------------|--|------------------------|
| Charlotte | De Clercq | <i>Eternal Continuation</i> | acrylic on canvas | 910 x 610 |
| Anuj | Devi | <i>Lord Ganesh (Indian God)</i> | acrylic on canvas | 762 x 765 |
| Jasmine | Edwards | <i>Dark Emotions</i> | acrylic on canvas | 762 x 610 |
| Jasmine | Edwards | <i>Secret Emotions</i> | acrylic on canvas | 762 x 610 |
| Dee | Egner | <i>Rainbow Explosion</i> | inks on canvas | 600 x 755 |
| Carla | Featherstone | <i>My First Painting</i> | acrylic on canvas | 200 x 255 |
| Judith | Ferris | <i>Rhythm of the Gorge</i> | acrylic on canvas | 1120 x 710 |
| Jenny | Fournier | <i>Perched and sat forevermore</i> | enamel aerosol and found metal objects | 595 x 350 |
| Norman | Fraser | <i>High Tide</i> | oil on board | 590 x 1210 |
| Glenis | Gray | <i>Looking for Eden</i> | mixed media on canvas | 400 x 400 |
| Peter | Gunn | <i>Bastille</i> | oil on linen | 1210 x 1320 |
| Deb | Hanks | <i>Embers</i> | acrylic on canvas | 610 x 920 |
| Jennifer | Harris | <i>Pizza Princess</i> | acrylic on canvas | 1520 x 760 |
| Melissa | Hartsorn | <i>FIFO Dad</i> | acrylic on canvas | 760 x 510 |
| Collin | Hatter | <i>Cabins</i> | acrylic on canvas | 440 x 600 |
| Madelyn | Hayes | <i>Contortion of women</i> | acrylic on canvas | 920 x 1220 |
| Geoffrey | Head | <i>Babel</i> | oil and aerosol with collage on canvas | 1350 x 880 |
| Gillian | Hickey | <i>Sheds I have known</i> | collage and inks on canvas | 1070 x 260 |
| Holly | Hughes | <i>Atlantis</i> | acrylic and resin on canvas | 915 x 1220 |
| Holly | Hughes | <i>Serenity</i> | acrylic on aluminium | 430 x 770 |
| Miriam | Innes | <i>Spheres & Grids II</i> | charcoal on linen | 700 x 1140 |
| Trisha | Jacobsen | <i>Aunty Jacqui - Portrait</i> | acrylic on canvas | 1220 x 410 |
| Michelle | Johnson | <i>Tabled</i> | mixed media on canvas | 1020 x 700 |
| Ruth | Jones | <i>Under My Skin</i> | acrylic and mixed media on canvas | 1520 x 1120 |
| Miho | Kato | <i>Furisode</i> | acrylic on canvas | 455 x 355 |
| Kristel Anne | Kelly | <i>Backtrack</i> | oil bars on canvas | 915 x 610 |
| Joanne | Kerr | <i>Grass along the Esplanade</i> | mixed media on wood | 740 x 570 |
| Kairen | Kerr | <i>Gallery</i> | oil on canvas | 990 x 1100 |
| Kairen | Kerr | <i>Mel's Wedding</i> | oil on canvas | 1010 x 740 |
| Tasman | Kleingeld | <i>Tingarri Men's Business</i> | acrylic on canvas | 1000 x 750 |
| Sarah | Larsen | <i>What Cost - The River of Gold</i> | mixed media on canvas | 1500 x 1200 |
| Sarah | Larsen | <i>The Perceptual Paradigm</i> | mixed media on canvas | 760 x 720 |
| Alexis | Law | <i>Gathering Thoughts</i> | watercolour and acrylic on canvas | 420 x 310 |
| John | Leyland | <i>Ethereal</i> | acrylic on canvas | 910 x 910 |
| John | Leyland | <i>At Rest</i> | acrylic on canvas | 760 x 1010 |
| Lea | Longyear | <i>Wishing I Was Fishing</i> | acrylic on canvas | 910 x 455 |
| Suzanne | Manhertz | <i>Girl... Uninterrupted</i> | mixed media on canvas | 600 x 500 |
| Sharilee | Marr | <i>Serpent</i> | acrylic on canvas | 1200 x 1000 |

The 41st Rio Tinto Martin Hanson Memorial Art Awards 2016

| NAME | | TITLE | MEDIUM | SIZE (H x W mm) |
|--------------|-------------------|---|--|------------------------|
| Sharilee | Marr | <i>Mining Matters</i> | acrylic on canvas | 910 x 1210 |
| Libby | Marsh | <i>The Cuban</i> | mixed media on canvas | 900 x 600 |
| Donna | Mason (nee Byrne) | <i>Mon Évasion (My Escape)</i> | oil on board | 400 x 1290 |
| Donna | Mason (nee Byrne) | <i>Hidden Oasis</i> | oil on canvas | 765 x 610 |
| Jemima | May | <i>In the shadow of the spotlight</i> | acrylic on canvas | each 760 x 510 |
| Teresa | May | <i>Down the Rabbit Hole</i> | acrylic on canvas | 700 x 1000 |
| Teresa | May | <i>Consider the Waterlily</i> | acrylic on canvas | 910 x 1220 |
| Rhonda | McClun | <i>Aussie Gums</i> | oils on canvas | 630 x 690 |
| Rhonda | McClun | <i>Find the Grub</i> | oil on canvas | 980 x 720 |
| Jennifer | McDuff | <i>Dead Iris</i> | oil on canvas | 400 x 1030 |
| Angela | Mohorovic | <i>Morbidly Beautiful</i> | chicken wishbones on hessian | 405 x 405 |
| Leisl | Mott | <i>Driving to Denman</i> | oil on board | 610 x 610 |
| Marlies | Oakley | <i>Woodblock Untitled I</i> | collaged and painted woodblocks on board | 1045 x 1595 |
| Marlies | Oakley | <i>Girl with a Pearl Earring</i> | recycled postage stamps on canvas board | 600 x 450 |
| Beverly | O'Brien | <i>Reflections of an inner landscape</i> | oil on canvas | 920 x 920 |
| Janette | O'Hare | <i>Spherical Bounce 1</i> | acrylic on canvas | 915 x 1220 |
| Janette | O'Hare | <i>Spherical Bounce 2</i> | acrylic on canvas | 510 x 760 |
| In Sun | Park | <i>Creation of a New Dawn</i> | oil on canvas | 610 x 915 |
| Alice | Pennycuik | <i>Woman Number 4</i> | acrylic on timber | 600 x 430 |
| Julie | Poulsen | <i>Horse paddock #2</i> | mixed media on canvas | 1010 x 1210 |
| Julie | Poulsen | <i>Last seen - Palm Cove</i> | mixed media on canvas | 840 x 840 |
| Alicia | Redshaw | <i>Waiting</i> | mixed media on canvas | 305 x 910 |
| Naomi-Jon | Redshaw | <i>Mr Seahorse</i> | mixed media on canvas | 915 x 455 |
| Gayle | Reichelt | <i>Shoreline Anchor (Charles Eaten Shipwreck)</i> | mixed media on board | 580 x 940 |
| Dawn Camille | Riddiford | <i>The Mouser</i> | oil on canvas | 760 x 1010 |
| Clive | Rouse | <i>Buddha</i> | wood endgrain inlay | 340 x 310 |
| Marci | Russo | <i>Pa Trilogy</i> | acrylic on canvas | 600 x 800 |
| Michelle | Salmon | <i>Abundance of Souls Transcending</i> | acrylic on canvas | 760 x 605 |
| Katherine | Scriffignano | <i>The Weight of the World</i> | acrylic on canvas | 1220 x 1220 |
| Marja | Shamier | <i>Malling</i> | oil on canvas | 510 x 410 |
| Michelle | Shaw | <i>IMAGINATION</i> | mixed media on canvas | 410 x 510 |
| Donna | Simpson | <i>Free Time</i> | mixed media on canvas | 900 x 1200 |
| Maanet | Sinkko | <i>The artist prepares</i> | oil on linen | 610 x 610 |
| Sally-Ann | Solomon | <i>BROKEN INTO BEAUTY</i> | acrylic on canvas | 750 x 1000 |
| Jasna | Spiranovic | <i>Boab Stroll</i> | oil on canvas | 600 x 600 |
| Jasna | Spiranovic | <i>Kimberley Mirage</i> | oil on canvas | 450 x 940 |
| Molly | Strickland | <i>The FAYZ</i> | acrylic on canvas | 920 x 600 |
| Robert | Sweeney | <i>Seen Better Days</i> | acrylic on masonite | 495 x 700 |

The 41st Rio Tinto Martin Hanson Memorial Art Awards 2016

| NAME | | TITLE | MEDIUM | SIZE (H x W mm) |
|-------------------|--------------|---------------------------------------|------------------------------------|------------------------|
| Robert | Sweeney | <i>Aground in Sandfly Creek</i> | acrylic on laminex | 295 x 380 |
| Beverley | Tainton | <i>Softly, Softly</i> | acrylic on canvas | 980 x 980 |
| Beverley | Tainton | <i>Riverbank</i> | acrylic and charcoal on canvas | 600 x 1200 |
| Arno | Tesling | <i>Grandchildren of Yozeppi</i> | oil on canvas | 1220 x 600 |
| Margaret | Tummon | <i>Creation</i> | acrylic on canvas | 510 x 510 |
| Christine | Turner | <i>The Saplings</i> | acrylic and collage on canvas | 1500 x 1500 |
| Colin | Van Kruining | <i>SAVE OUR REEF</i> | acrylic on canvas | 915 x 1215 |
| Colin | Van Kruining | <i>BARRA COUNTRY</i> | acrylic on canvas | 915 x 1215 |
| Ilse | Van Staden | <i>The Hovering</i> | acrylic on board | 590 x 890 |
| Ilse | Van Staden | <i>Cave</i> | acrylic on board | 590 x 890 |
| Robyn | Verdel | <i>ANCIENT LAND</i> | oil on canvas | 810 x 630 |
| Renee | Walker | <i>Barrington</i> | acrylic on canvas | 610 x 910 |
| Ian | Watts | <i>Contraband</i> | oil on canvas | 610 x 955 |
| Belynda (Bindi) | Waugh | <i>FORSAKING OF THE SACRED MOTHER</i> | acrylic on canvas | 1500 x 1010 |
| Chloe Rose | Wheatland | <i>The ugly duckling</i> | acrylic on canvas | 745 x 1000 |
| Tanya | Whelan | <i>Enfans</i> | ink pens on canvas | 500 x 700 |
| Denise | Wild | <i>Reef Encounters</i> | acrylic on canvas | 1030 x 760 |
| Adrienne | Williams | <i>Magenta Zone Hot Harvest</i> | oil on canvas | 915 x 710 |
| Jo | Williams | <i>Still Life with Chairs</i> | acrylic on board | 1500 x 1000 |
| Jay | Wilson | <i>Eye Am</i> | acrylic on canvas | 400 x 500 |
| Natalie Josephine | Wilson | <i>The Man in the Window</i> | acrylic on canvas | 305 x 410 |
| Beryl | Wood | <i>ONE OF THE LAST SMALL CORNERS</i> | acrylic on canvas | 610 x 910 |
| Beryl | Wood | <i>ANOTHER ONE!</i> | acrylic on canvas | 610 x 800 |
| Dorothy | Wood-de-melo | <i>Serine Sadness</i> | acrylic and tissue paper on canvas | 600 x 500 |
| Veronika | Zeil | <i>Greenzone Rising</i> | acrylic and oil on board | 1200 x 1200 |
| Veronika | Zeil | <i>Urban Wilderness - Battlers 2</i> | mixed media on board | 1200 x 1200 |
| Robin | Zimmerlie | <i>The Way I Feel</i> | aerosol on canvas | 300 x 400 |

The 41st Rio Tinto Martin Hanson Memorial Art Awards 2016

Section 2: Works on Paper Drawing, watercolour, collage, mixed media, print etc., on paper based supports

| NAME | | TITLE | MEDIUM | SIZE (H x W mm) |
|-------------|----------------|--|---|------------------------|
| Jeanette | Albury | <i>Goomboorian</i> | watercolour on paper | 265 x 265 |
| Clinton | Barker | <i>Fresh</i> | screen print and etching on paper | 480 x 480 |
| Bartuccio | | <i>Purple Haze</i> | watercolour on paper | 220 x 300 |
| Marilyn | Batty | <i>Out of the ashes</i> | mixed media on handmade paper | 545 x 335 |
| Carmen | Beezley-Drake | <i>Patchwork Valley</i> | acrylic and collage on paper | 500 x 600 |
| Mostyn | Bramley-Moore | <i>Hair Ears</i> | mixed media on paper | 385 x 280 |
| Terri | Brooks | <i>Pink Boy Blue Girl (Gainsborough)</i> | oil and enamel on paper | 580 x 800 |
| Christina | Brook-Sperring | <i>Ebony and Ivory</i> | pastel on paper | 190 x 240 |
| Jacqueline | Burchill | <i>My image of Audrey</i> | graphite and gel pen on paper | 140 x 140 |
| Jessica | Butler | <i>Little Owl</i> | watercolour on canvas paper | 235 x 190 |
| Rita | Byron | <i>THE SPLENDOUR OF AUTUMN</i> | watercolour on paper | 300 x 250 |
| Susanne | Capewell | <i>Time Stood Still</i> | graphite on Strathmore vellum paper | 220 x 350 |
| Susanne | Capewell | <i>Burnett Morning Glory</i> | soft pastel on Mi-Teintes paper | 705 x 520 |
| Ping | Carlyon | <i>Good Morning Gladstone</i> | watercolour on arches paper | 1600 x 1020 |
| Ping | Carlyon | <i>Good Night Gladstone</i> | watercolour on arches paper | 1600 x 1020 |
| Melissa | Christi | <i>Twisted</i> | pencil on paper | 190 x 280 |
| Vanessa | Christi | <i>Study in Diagrammatics</i> | graphite and chalk on paper | 255 x 370 |
| Suyee | Clifford | <i>Kitchen table</i> | mixed media on watercolour paper | 550 x 745 |
| Sheridan | Cobcroft | <i>More Water</i> | ink and watercolour on paper | 205 x 291 |
| Leanne | Cole | <i>Laneways of Melbourne</i> | watercolour on paper | 465 x 320 |
| Diana | Davey | <i>CANTEEN QUEEN</i> | ink on paper | 380 x 260 |
| Judith | Ferris | <i>Chillago sketch construction</i> | mixed media on paper | 535 x 975 |
| Louise | Flack | <i>My Grandfather</i> | pastel and ink on paper | 590 x 415 |
| Louise | Flack | <i>African Lady</i> | pastel on paper | 590 x 435 |
| Jenny | Gilbertson | <i>Sequoia Sky</i> | ink on paper | 550 x 375 |
| Glenis | Gray | <i>Elements 3</i> | ink on paper | 185 x 420 |
| Ann | Grocott | <i>Friday Afternoon (Studio Model)</i> | gouache on paper | 295 x 440 |
| Rew | Hanks | <i>The Battle of The Wills</i> | linocut print on paper | 1040 x 750 |
| Rew | Hanks | <i>Playing for Keeps</i> | linocut print on paper | 750 x 1060 |
| Tyrone | Hartig | <i>Drowning Man</i> | coloured pencil on paper | 285 x 200 |
| Collin | Hatter | <i>Upside-Down</i> | acrylic on paper | 440 x 595 |
| Gillian | Hickey | <i>Him 'n' me by the sea</i> | ink on paper | 285 x 210 |
| Roslyn | Howse | <i>Supernova (Triptych)</i> | fluid acrylic on 300gsm watercolour paper | each 285 x 200 |
| Marion | Hughes | <i>My Dad</i> | watercolour on paper | 300 x 200 |
| Marion | Hughes | <i>Majestic</i> | mixed media and watercolour on paper | 290 x 200 |
| Miriam | Innes | <i>Spheres I</i> | charcoal on Arches paper | 800 x 600 |
| Michelle | Johnson | <i>Empty Nest</i> | charcoal and pastel on paper | 1040 x 780 |

The 41st Rio Tinto Martin Hanson Memorial Art Awards 2016

| NAME | | TITLE | MEDIUM | SIZE (H x W mm) |
|----------------|-------------|--|--|-----------------|
| Carol | Keech | <i>Gecko Way</i> | acrylic and stones on paper | 840 x 495 |
| Rebecca | Kirk | <i>Refugee</i> | soft pastel on paper | 500 x 450 |
| Rebecca | Kirk | <i>Doubtful</i> | graphite pencil on paper | 550 x 380 |
| Christine | Krebs | <i>Guardian of the Night</i> | collagraph print on paper | 505 x 340 |
| Christine | Krebs | <i>Reef 2</i> | collagraph print on paper | 310 x 255 |
| Sue | Lederhose | <i>Outcrop, Wanna Station</i> | watercolour on paper | 450 x 860 |
| Sue | Lederhose | <i>Waterfall</i> | watercolour on paper | 480 x 660 |
| Felicia | Lloyd | <i>TRADE WASTE</i> | carbon drawing and watercolour on paper | each 290 x 200 |
| Katie | Loader | <i>The Kiani</i> | graphite and pencil on paper | 680 x 855 |
| Katie | Loader | <i>Soul</i> | graphite on paper | 405 x 815 |
| Penny | Mason | <i>Landscape Humour #4</i> | watercolour and ink on paper | 750 x 750 |
| Catherine | McCue | <i>Marriage plebiscite, yes, no</i> | mixed media on paper | 680 x 440 |
| Catherine | McCue | <i>War Games for Children</i> | mixed media on paper | 270 x 340 |
| Victoria | McDonald | <i>Septplier</i> | mixed media on paper | 300 x 420 |
| Chris | Mclauchlan | <i>Spinnaker Park Fresh Water Lagoon</i> | pastel on paper | 513 x 675 |
| Chris | Mclauchlan | <i>The Bluff</i> | mixed media on paper | 206 x 200 |
| Kerri-Anne | Mesner | <i>Untitled</i> | graphite on paper | 265 x 300 |
| Sandi | Michel | <i>Phare Bear</i> | watercolour, ink, pencil on paper | 760 x 570 |
| Sheena | Mijnhout | <i>Sweetness of a child</i> | watercolour on paper | 280 x 180 |
| Beau-Dean | Moloney | <i>DE-CONSTRUCTION</i> | linocut print on paper | 320 X 230 |
| Yvonne | Moloney-Law | <i>Arthur River Flow</i> | intaglio print, embossed particles on paper | 630 x 1050 |
| Yvonne | Moloney-Law | <i>Gawula - Cycle of Creation</i> | intaglio print, embossed particles on paper | 600 x 540 |
| Matthew | Newkirk | <i>Blind Man's Bluff</i> | screen print on 200gsm rag paper | 500 x 750 |
| James Thomas | Nightingale | <i>THÁRRROS / FÓVOS</i> | watercolour and pen on paper | 650 x 480 |
| Alice | Pennycuik | <i>Daily Grind</i> | acrylic on card | 390 x 480 |
| Tricia | Reust | <i>Tenacious History</i> | mixed media on 640gsm watercolour paper | 710 x 460 |
| Selwyn | Rodda | <i>Companions</i> | mixed media on paper | 700 x 550 |
| Anita | Rosher | <i>Cordalba Series: 1</i> | linocut print on paper | 170 x 120 |
| Anita | Rosher | <i>Cordalba Series: 2</i> | linocut print on paper | 150 x 100 |
| Sandra | Ross | <i>Tethered to a dream</i> | mixed media on paper | 700 x 1000 |
| Jan | Ross-Manley | <i>Past Port Souvenir</i> | Composit drawing and montage on draughting stock | 900 x 1240 |
| Kim | Scrimshaw | <i>Nesting</i> | acrylic on paper | 330 x 545 |
| Todd | Small | <i>7:10</i> | watercolour on paper | 290 x 180 |
| Todd | Small | <i>Street Lights</i> | watercolour on paper | 130 x 200 |
| Ray | Sparks | <i>Gurruumul - A Glimpse At His Life</i> | graphite pencil on paper | 1120 x 530 |
| Ray | Sparks | <i>Gurruumul</i> | graphite pencil on paper | 520 x 360 |
| Molly | Strickland | <i>Davy Jones Character Profile</i> | pencil on paper | 285 x 196 |
| Lynne Perronet | Thomas | <i>Memories of Beach Walks</i> | watercolour on paper | 500 x 700 |

The 41st Rio Tinto Martin Hanson Memorial Art Awards 2016

| NAME | | TITLE | MEDIUM | SIZE (H x W mm) |
|--------------------------------|-----------------|---|--|------------------------|
| Jake | Thompson | <i>Midnight Dreary</i> | graphite and charcoal on toned paper | 360 x 330 |
| Clare | Ubrihien | <i>Bush Tree Frog</i> | pastel on paper | 200 x 240 |
| Henri | van Noordenburg | <i>Composition XXXVI 3/5</i> | hand carved inkjet print on Hahnemulhe paper | 400 x 300 |
| Winka | von Fahland | <i>The Transient Nature of Time (Goondoon Street)</i> | mixed media on paper | 530 x 730 |
| Peter | Walker | <i>DUCATI</i> | pencil and sharpie pen on paper | 280 x 400 |
| Belynda (Bindi) | Waugh | <i>IDENTIFY</i> | ink on paper | 590 x 490 |
| Glen | Wex | <i>Dad</i> | pastel on paper | 380 x 290 |
| Chloe Rose | Wheatland | <i>The place I call home</i> | watercolour on paper | 180 x 243 |
| Jordan | Wiemers | <i>Envy</i> | mixed media on paper | 594 x 420 |
| Cleo | Wilkinson | <i>Witness II</i> | mezzotint print on paper | 290 x 290 |
| Adrienne | Williams | <i>Storms Along the Sierra Vista Trail</i> | mixed media on paper | 380 x 1370 |
| Jo | Williams | <i>Magmata</i> | mixed media on paper | 983 x 680 |
| Lou Hely and Natalie Josephine | Wilson | <i>Opposing by Uniting</i> | mixed media print on paper | 395 x 570 |
| Jennifer | Yujnovich | <i>Blue Rocks, South End, Curtis Island</i> | ink on paper | 200 x 570 |
| Rachael | Zander | <i>Sea Hill Lighthouse</i> | pen and wash on paper | 390 x 410 |

The 41st Rio Tinto Martin Hanson Memorial Art Awards 2016

Section 3: Three Dimensional and Fibre Works

Pottery hand built/wheel thrown, sculpture including maquettes, carving, assemblage, timber, metal, stone, plastics, fibre etc.

| NAME | | TITLE | MEDIUM | SIZE (H x W x D mm) |
|-------------------|------------|---|---|----------------------------|
| Rosemary | Anderson | <i>She Nests in Pumice</i> | metal, wood, sandstone, wire and pumice | 1450 x 600 x 600 |
| Beryl | Beale | <i>Loved Margaret Olley - So I stitched one</i> | cotton fabric and beads | 1200 x 1000 |
| Peta Lloyd & Sean | Biddulph | <i>Memento</i> | mixed media assemblage | variable |
| Sandy | Bielenberg | <i>Perspective #2</i> | eco dyed fabric | 360 x 890 |
| Sandy | Bielenberg | <i>Skin Thing</i> | eco dyed fabric, snake skin and wood | 690 x 45 x 55 |
| Marjorie | Cameron | <i>The Twins</i> | limestone | 400 x 300 x 300 |
| Marjorie | Cameron | <i>Mystic Garden</i> | mixed media | 1400 x 500 x 460 |
| Daniel | Carlyon | <i>Matter of Time</i> | cowhide and timber | 1200 x 1400 |
| Greg | Chapman | <i>Just Do It</i> | stainless steel | 1160 x 1160 x 30 |
| Suyee | Clifford | <i>Is it coffee time yet?</i> | aluminium coffee pods and mixed media | 530 x 430 x 370 |
| John | Cooper | <i>A Fish Set for an Industrial Ocean</i> | mixed media | 630 x 450 x 350 |
| Clinton | Cross | <i>Is this Country Music?</i> | ceramic assemblage | 300 x 260 |
| Cynthia | Davies | <i>Merging Corporate Ties</i> | recycled men's ties | 1560 x 1060 x 500 |
| Sue | Daw | <i>TODAY'S CATCH</i> | paper mache, collaged with painted rice paper | 470 x 650 x 400 |
| Johanna | DeMaine | <i>Subterranean Crossing</i> | porcelain | 145 x 245 x 200 |
| Elspeth | Donlen | <i>Tsar Tsar Empress</i> | mixed media | 1650 x 1320 x 1130 |
| Sharon | Farcich | <i>Sea Treasure</i> | wire, beads, wool and shell | 1200 x 550 x 30 |
| Carol | Forster | <i>Chiaroscuro</i> | porcelain, brick clay and glaze | variable |
| Jenny | Fournier | <i>Meteor Joy Rider in Critical Condition</i> | found objects | 280 x 270 x 270 |
| Cheryll | Gibson | <i>Web of Deception</i> | mixed media on fabric | 1400 x 900 x 500 |
| Lidia | Godijn | <i>Indigo, Silk, a Japanese Connection</i> | handwoven, hand dyed silk | 720 x 1550 |
| Angela | Goulton | <i>Silo's</i> | mixed fibre | variable |
| Peter | Gunn | <i>Lift-off</i> | timber | 1650 x 1200 x 1650 |
| Rowena | Hausheer | <i>Mock - Linen Handkerchief</i> | clay | 70 x 200 x 180 |
| Lesa | Hepburn | <i>Resonate</i> | twined hibiscus, bast fire and copper | 140 x 210 x 210 |
| Christine | Holden | <i>Clowning Around</i> | marine debris | 800 x 720 x 720 |
| Christine | Holden | <i>Jellyfish Blues</i> | fishing line | 270 x 150 x 150 |
| Mareika Laurel | Holmes | <i>Scared Wolf Teacher - Talking Stick</i> | mixed media | 1040 x 140 x 100 |
| Diane | Holzapfel | <i>Star Burst</i> | Sterling Silver on Gold Set Sapphire | variable |
| Diane | Holzapfel | <i>Galaxy of Gems</i> | Sterling Silver Set Sapphires | variable |
| John | Holzapfel | <i>End of the Rainbow</i> | Sterling Silver set Opal | variable |
| John | Holzapfel | <i>Autumn Leaf</i> | Sterling Silver set Opal | variable |
| David | Huntly | <i>Siren</i> | stainless steel and brass | 560 x 550 x 180 |
| David | Huntly | <i>We're Going</i> | stainless steel and brass | 1110 x 830 x 240 |
| Lisa | Jenkins | <i>Freedom</i> | mixed media | 1200 x 850 x 420 |
| Carol | Keech | <i>Even nature; restless waves</i> | mixed media on ply wood | 900 x 600 x 170 |
| Jude | Kennedy | <i>Two's Company, Three's a Colony!</i> | BSW clay, glazes and oxides | variable |

The 41st Rio Tinto Martin Hanson Memorial Art Awards 2016

| NAME | | TITLE | MEDIUM | SIZE (H x W x D mm) |
|-------------|-------------------|--------------------------------------|--|----------------------------|
| Suzane | Krete de Souza | <i>TRASH TO TREASURE</i> | weaving with recycled materials | 250 x 1150 x 1150 |
| Suzane | Krete de Souza | <i>SUBLIME LOBSTER</i> | wire and coral | 580 x 1400 x 1650 |
| Peta | Lloyd | <i>Pierre qui roule n'amasse</i> | mixed media assemblage | variable |
| Brenda | Lyon | <i>Breach</i> | stoneware clay | 300 x 430 x 500 |
| Fiona | Marxsen | <i>Potential</i> | plaster bandage, fibreglass | 1650 x 900 x 900 |
| Fiona | Marxsen | <i>Emergence</i> | plaster bandage, fibreglass | 1100 x 600 x 510 |
| Keith | Michel | <i>Nagasaki</i> | Huon pine | 1040 x 300 x 300 |
| Keith | Michel | <i>Rescued - Mounted</i> | driftwood | 1350 x 1140 x 200 |
| Andreia | Pereira | <i>This house is full of madness</i> | ceramic, handbuilt, and brass | 1050 x 220 x 220 |
| Laura | Phillips | <i>Landscape Bowls</i> | wood fired pottery | variable |
| Chad | Ryan | <i>Shocked</i> | metal | 1200 x 300 x 240 |
| Jennifer | Sanzaro-Nishimura | <i>Elemental Alchemy</i> | mixed media | variable |
| Kim | Scrimshaw | <i>Book keeper of memories</i> | photograph on Hosho paper | variable |
| Ljubov | Seidl | <i>Power of Water Spring</i> | aluminium and granite | 330 x 70 x 50 |
| Tamara | Sladojevic | <i>Mother and Daughters</i> | wild clay, rock glaze, wood fired | 200 x 200 x 200 |
| Tamara | Sladojevic | <i>Phenotype</i> | wild clay, wood fired in Anagama Kiln | 400 x 100 x 100 |
| Tania | Small | <i>Striking in Gold</i> | 9 Carat Gold, green tormaline | 30 x 25 x 17 |
| Tania | Small | <i>Splash</i> | Silver, 9 Carat Gold, Aquamarine | 30 x 25 x 7 |
| Cath | Smith | <i>Ritual Steed</i> | clay handbuilt | 340 x 250 x 160 |
| Cath | Smith | <i>Save Me</i> | clay handbuilt | 150 x 300 x 120 |
| Tracey-Lea | Smith | <i>Turning over a new</i> | wire and found objects | 450 x 180 x 10 |
| Trevor | Spohr | <i>Hat Box for Ritchie</i> | cast lead crystal, reclaimed objects on glaze enamel | 400 x 450 x 450 |
| Trevor | Spohr | <i>Passage</i> | cement fondue, reclaimed objects | 250 x 200 x 775 |
| Jan | Strudwick | <i>I love a sunburnt country...</i> | recycled cloth | 600 x 890 |
| Jan | Strudwick | <i>Eastern Lost City</i> | recycled cloth | 890 x 610 |
| Arno | Tesling | <i>Grandson of Yozeppi</i> | wood, stone, grass | 1460 x 530 x 960 |
| Lynn | Thomson | <i>Life Cycles</i> | art glass on recycled window in aluminium frame | 505 x 750 x 10 |
| Lynn | Thomson | <i>Butterfly Birdbath</i> | terracotta, tile and grout | 600 x 500 x 500 |
| Ian | Watts | <i>Sahara Rose Violin</i> | wood and oil paint | variable |
| Kevin | Weekes | <i>Escaping Together</i> | wood, various, and chain | 1470 x 400 x 300 |
| Claudia | Wehrli | <i>NBN Gatcombe Head</i> | found objects, wire, foam, paint | 740 x 1500 x 500 |
| David | Woergoetter | <i>Gladstone Pot No. 1</i> | clay | 290 x 290 x 40 |
| David | Woergoetter | <i>Gladstone Pot No. 2</i> | clay | 290 x 290 x 40 |
| Keith | Wood | <i>THE GATE KEEPER</i> | wood | 450 x 170 x 100 |
| Margaret | Woolner | <i>Morrocan Candle</i> | timber and acrylic | 1130 x 200 x 200 |

The 41st Rio Tinto Martin Hanson Memorial Art Awards 2016

Section 4: Digital Works Photography, animation, moving image, soundscapes etc.

| NAME | | TITLE | MEDIUM | SIZE (H x W mm) |
|-----------------------------------|------------------|--|--|----------------------------|
| Sean | Biddulph | <i>A Pocket Full of Time and Space</i> | photograph on fine art paper | 562 x 1200 |
| Lynda | Black | <i>The Passing</i> | stop-motion animation | 34 sec |
| Lynda | Black | <i>The Farewell</i> | stop-motion animation | 34 sec |
| Frederic | Braat | <i>the day of the beach</i> | computer graphics on paper | 600 x 1150 |
| Darryl | Branthwaite | <i>Timber in a concrete jungle</i> | photograph on paper | 105 x 235 |
| John | Brauers | <i>The way back</i> | photograph on paper | 1480 x 990 |
| John | Brauers | <i>The Rock Festival</i> | photograph on paper | 850 x 360 |
| Christina | Brook-Sperring | <i>In Hinde-Sight</i> | photograph on paper | 400 x 520 |
| Melissa | Christi | <i>Golden Waters</i> | photograph on paper | 200 x 290 |
| Jen | Corbell | <i>Gladstone Starry Night</i> | photograph on paper and embroidery on fabric | each 277 x 195 |
| Jen | Corbell | <i>Bright Lights on a Rainy Night</i> | photograph on paper | 210 x 387 |
| Kevin | Erickson | <i>The Skies of Gladstone</i> | video | 3 min 14 sec |
| Maree | Freemantle | <i>The wildlife that visit our garden</i> | digital print on canvas | 770 x 500 |
| 91.9 Fresh FM | | <i>Country Roads</i> | photograph on paper | 245 x 190 |
| 91.9 Fresh FM | | <i>Power in Tranquillity</i> | photograph on paper | 245 x 190 |
| Siddi | Furness | <i>Berries 3 ways: triptych</i> | digital photograph on paper | each 290 x 290 |
| Anna | Glynn | <i>Cane (no. 5 in edition of 10)</i> | moving image | 6 min 10 sec |
| Chrissy | Harris | <i>Lace Glove</i> | manipulated photograph on paper | 300 x 200 |
| Dale | Hewett | <i>Copy. Flip. Swirl. Block. Line.</i> | digital print on aluminium composite panel | 1500 x 500 |
| Dale | Hewett | <i>Oh look it's a sail boat</i> | digital print on aluminium composite panel | 900 x 1000 |
| Jakob | Holmes | <i>Beauty of Birds</i> | photograph on perspex | 450 x 600 |
| Katherine | Holmes | <i>Lazy Day's</i> | photograph on paper | 190 x 240 |
| Katherine | Holmes | <i>Untitled</i> | photograph on paper | 190 x 240 |
| Suzanne | Howard | <i>Group Hug</i> | HD video | 5 min 30 sec |
| Sara | Irannejad | <i>Reflection of the Finite Mind</i> | video | 4 min 43 sec |
| Vesna | Klačar-Nedimović | <i>Fragments II Brisbane: Brisbane River III</i> | digital print on Hahnemuhle paper | 370 x 250 |
| Hayley Groves George and Susie | Lewis | <i>Battlefield: Known Enemy</i> | video | 5 min |
| Ashlea | McFarlane | <i>Midnight Beach</i> | manipulated photograph on paper | 450 x 400 |
| Daniel | McKewen | <i>Promises, more promises</i> | single channel video | 7 min 47 sec |
| Daniel | McKewen | <i>Perfect (after John)</i> | single channel video | 2 min 42 sec |
| Kent | Murray | <i>Yesterday's Job</i> | photograph on paper | 390 x 305 |
| Matthew | Newkirk | <i>Heart Attack Man</i> | digital video | 1 min 51 secs |
| Jan | Ross-Manley | <i>Strange Times on Goondoon Street #2</i> | "Creative" photograph on paper | 395 x 395 |
| Jennifer | Ryan | <i>Pelican and Child</i> | digital print on photographic paper | 400 x 290 |
| Jennifer | Ryan | <i>Heightened</i> | digital print on photographic paper | 270 x 390 |
| Catherine | Schoch | <i>Screen: Clouds, water, leaves</i> | digital print on paper and video | 575 x 740 11 min 53 sec |
| Kate | Simons | <i>The land of milk and honey</i> | photograph on paper | 300 x 440 |

The 41st Rio Tinto Martin Hanson Memorial Art Awards 2016

| NAME | | TITLE | MEDIUM | SIZE (H x W mm) |
|-------------|-------------|--|----------------------------------|------------------------|
| Kate | Simons | <i>Silent Ode</i> | photograph on paper | 300 x 440 |
| Tracey-Lea | Smith | <i>Passing time</i> | vinyl photograph on metal | 500 x 1300 |
| Meghan | Stewart | <i>"THE FALL" Cedar Creek Falls</i> | photograph on canvas | 760 x 1520 |
| David M. | Thomas | <i>The Cullen Award for Exurlence (highly commended)</i> | HD video | 15 min 17 sec |
| Ellie | Tregaskis | <i>Death, what's next?</i> | photograph on paper | each 294 x 294 |
| Michelle | Wagner | <i>Smoko Time</i> | digital photograph on photopaper | 295 x 385 |
| Michelle | Wagner | <i>Fred</i> | digital photograph on photopaper | 290 x 345 |
| Kurt | Warhurst | <i>APHRODITE EN ZAO</i> | photograph, polyprop print | 1520 x 1205 |
| Kurt | Warhurst | <i>TREASURERS</i> | photograph, polyprop print | 1615 x 1065 |
| Richard | Williams | <i>French Delight - Lake Annecy</i> | photograph on paper | 200 x 375 |
| Richard | Williams | <i>Hidden Sunrise - Brunswick Heads</i> | photograph on glass | 510 x 760 |
| Robert | Williams | <i>The Squatter</i> | photograph on paper | 500 x 283 |
| Ella | Winter-Wood | <i>Jade</i> | digital art on paper | 80 x 250 |
| Margaret | Worthington | <i>Sea becomes sky</i> | vinyl decal | 1200 x 600 |

The 41st Rio Tinto Martin Hanson Memorial Art Awards 2016

The winners of the following Awards will be announced 6pm, Saturday 15 October 2016 and published online

The Rio Tinto Martin Hanson Memorial Art Award: \$15,000

Works in all sections are eligible for this overall Award

The John Anderson Memorial Acquisitive Award, sponsored by Anderson's Auto City: \$5,000

Works in all sections are eligible for this Award, limited only by seller's price

The Pieter Groen-int-woud Memorial Young Emerging Artist Award, sponsored by Multitrade: \$1,500

Works in all sections by Queensland residents aged 15 to 25 years are eligible for this Award

The Local Murri Artist Award, sponsored by Elizabeth & Leo Zussino: \$1,000

Works in all sections by Aboriginal, Torres Strait or South Sea Islander artists of the local region are eligible for this Award

The Gail Sellers Local Artist Award: \$1,000

Works in all sections by residents of the local region are eligible for this Award

The Installers Choice Award, sponsored by Laureen Tkacik and GRAGM: \$500

Works in all sections are eligible for this Award

SECTION 1: Easel Paintings

Mixed media, acrylic, collage, oil, print etc., on non-paper based supports, e.g. canvas, masonite etc.

The Gladstone Area Water Board Award: \$2,000

The Christian Thomsen Award: \$1,000

The Gladstone Picture Framing (Open Order) Award: \$500

SECTION 2: Works on Paper

Drawing, watercolour, collage, mixed media, print etc., on paper based supports

The Australia Pacific LNG Award: \$2,000

The Bush Family Award: \$1,000

The Jeff Spann Award: \$500

SECTION 3: Three Dimensional & Fibre Works

Pottery hand built/wheel thrown, sculpture including maquettes, carving, assemblage, timber, metal, stone, plastics, fibre etc.

The Gladstone Ports Corporation Award: \$2,000

The Swift Award: \$1,000

The Queensland Energy Resources (QER) Award: \$500

SECTION 4: Digital Works

Photography, animation, moving image, soundscapes etc.

The McDonald's Gladstone Region Award: \$2,000

The CQUniversity Award: \$1,000

The Creative Gladstone Region Inc. and Crow Street Creative Award: \$500

The 41st Rio Tinto Martin Hanson Memorial Art Awards 2016

The winners of The QAL People's Choice Awards will be announced Wednesday, 7 December 2016 and published online

The QAL People's Choice Awards

All works are eligible to win in their registered section, as voted by the general public at the Gallery & Museum

SECTION 1: Easel Paintings: \$500

SECTION 2: Works on Paper: \$500

SECTION 3: Three Dimensional & Fibre Works: \$500

SECTION 4: Digital Works: \$500



You be the judge.

The 41st Rio Tinto Martin Hanson Memorial Art Awards & Exhibition is on now and we want you to be the judge.

Cast your vote in the QAL People's Choice Awards... and you just might **win a two-night, all inclusive package at 1770 Getaway Retreat.**

Exhibition:

Open Monday – Saturday
10am – 5pm

Gladstone Regional
Art Gallery & Museum,
Cnr Goondoon
& Bramston Sts, Gladstone

Prize includes:

- Two nights staying at 1770 Getaway in a Luxury Garden Villa for 2 adults - Breakfast included
- LARC Afternoon Cruise for two adults
- Dinner for two at Plantations Bar & Restaurant (valued \$150)

Voting:

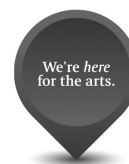
Cast your vote on the QAL iPad kiosks in the Gallery & Museum by midday Monday 5th December 2016*

*Winner notified by phone and email

hereforgladstone.com.au



PEOPLE'S
CHOICE AWARDS



RioTinto

NOTES FOR YOUR VOTES:

| SECTION | ARTIST NAME | ARTWORK NAME |
|---|-------------|--------------|
| SECTION 1: Easel Paintings | | |
| SECTION 2: Works on Paper | | |
| SECTION 3: Three Dimensional & Fibre Works | | |
| SECTION 4: Digital Works | | |

The Gladstone Regional Art Gallery & Museum would like to thank the following sponsors for their generous and vital contribution to The 41st Rio Tinto Martin Hanson Memorial Art Awards 2016

RioTinto



QUEENSLAND ALUMINA
LIMITED



Operated by

ConocoPhillips



ELIZABETH &
LEO ZUSSINO

GAIL
SELLERS

CHRISTIAN
THOMSEN

THE BUSH
FAMILY

SWIFT



Gladstone
Picture
Framing

JEFF
SPANN



Crow
Street
Creative

LAUREEN
TKACIK



Gladstone Regional Art Gallery & Museum is a community cultural initiative of the Gladstone Regional Council

