



**15. Abundance...**  
**"How It Used To Be"**

Coral Southee

Various  
Acrylics on fibreglass & terracotta pot

A representation of the Aboriginal lifestyle before European settlement. Abundant Respect. Abundant Food. Abundant Water. Abundant Plant Life. Abundant Wild Life. Abundant Tradition. Abundant Culture. The pot shows the colours of our Flag and represents how we continue to stand tall and proud.



**16. All Land Is One Land**

Coral Southee

500 x 500 mm  
Acrylics on canvas

As the title suggests, I believe that all land is one land. Even though there are barriers of water, and different countries as such, beneath it all is the same soil. It goes in different directions and takes on many forms, is ruled and governed by different peoples however, all the land is indeed one land.



**17. The Spiral**

Coral Southee

800 x 1000 mm  
Acrylics on canvas

Our lives are made of a series of events. From childhood through to adulthood we experience continual moments that force us to make choices. These choices can be subconscious or forced. However, it is the result of these choices that will see us either spiral upwards or down in our lives.



**18. You Brought Me Water When I Was Thirsty**

Allen Craigie

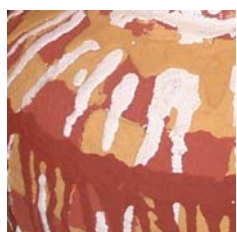
400 x 250 mm  
Ochres on terracotta



**19. I Was Lost And You Gave Me Direction**

Allen Craigie

400 x 300 mm  
Ochres on terracotta



**20. Untitled**

Allen Craigie

400 x 300 mm  
Ochres on terracotta

*Through My Eyes* is an exhibition of individual and collaborative works portraying the ideals and personal beliefs of well-established local Indigenous artists Allen Craigie and Coral Southee.

Allen Craigie's featured artworks were inspired in a pathway through grief after the deaths of three people close to him. Having lost these people in such a short time, Allen painted as a means of coping with this stage of his life. Some works in this exhibit are based on scriptures from his religious beliefs from which he derived peace of mind.

A descendant of the Wangkamana and Kaanju tribes, Allen works in traditional ochres on timber and canvas, currently experimenting with layering and carving into the raw pigment to achieve a three-dimensional effect.

Artistically driven most of his life, Allen has been exhibiting his paintings publicly over the past few years, and has been successful in selling works in America, Canada, Italy, and Japan.

A descendant of the Birrigubba tribes, Coral Southee is a self-taught artist who has been painting for over ten years. Coral works predominantly with acrylic on canvas and sees her art as a continuation of the culture and tradition of Aboriginal art.

Although contemporary, Coral's artworks reflect traditional styles and symbolism. She prefers using dot painting and crosshatching techniques feeling that they further promote tradition.

Since the early 1990s, Coral has gained recognition for her work, especially in her home town of Gladstone in the last five years. Commercially she has been successful in selling her work overseas and now has paintings represented in collections worldwide.

In 2004, Allen and Coral were selected by the Gladstone-Saiki Sister City Advisory Committee to represent Gladstone as artistic ambassadors to Saiki in Japan. Together they prepared two Aboriginal story poles depicting Australian wildlife in a traditional manner. A third pole was painted in Japan where Allen and Coral worked with Saiki city residents during their visit. The three poles currently stand in Kangaroo Garden, Saiki.

Coral and Allen's artworks complement each other both visually and spiritually and will be on display at the Gladstone Regional Art Gallery & Museum until 9 February 2008.

### Price list available at the front counter

#### SUPPORTING SPONSORS

Queensland Government  
Department of Justice and Attorney General  
*Fiona Craigie*  
Regional (Support) Murri Court Case Co-Coordinator Magistrates Courts Branch

Allied Pickfords Gladstone  
*Lucia Hamilton & Helen Curran*  
(L&H Enterprises)

Gladstone Picture Framers  
*Hayley & Ken Ridden*

Valley News Agency  
*Brett Williams*



Gladstone Regional Art Gallery and Museum/ **ADMISSION FREE**  
Cnr Goondoon & Bramston Sts/ Phone: (07) 4976 6766  
Fax: (07) 4972 9097/ Email: [gragm@gragm.qld.gov.au](mailto:gragm@gragm.qld.gov.au)  
Open: Monday - Saturday 10am - 5pm

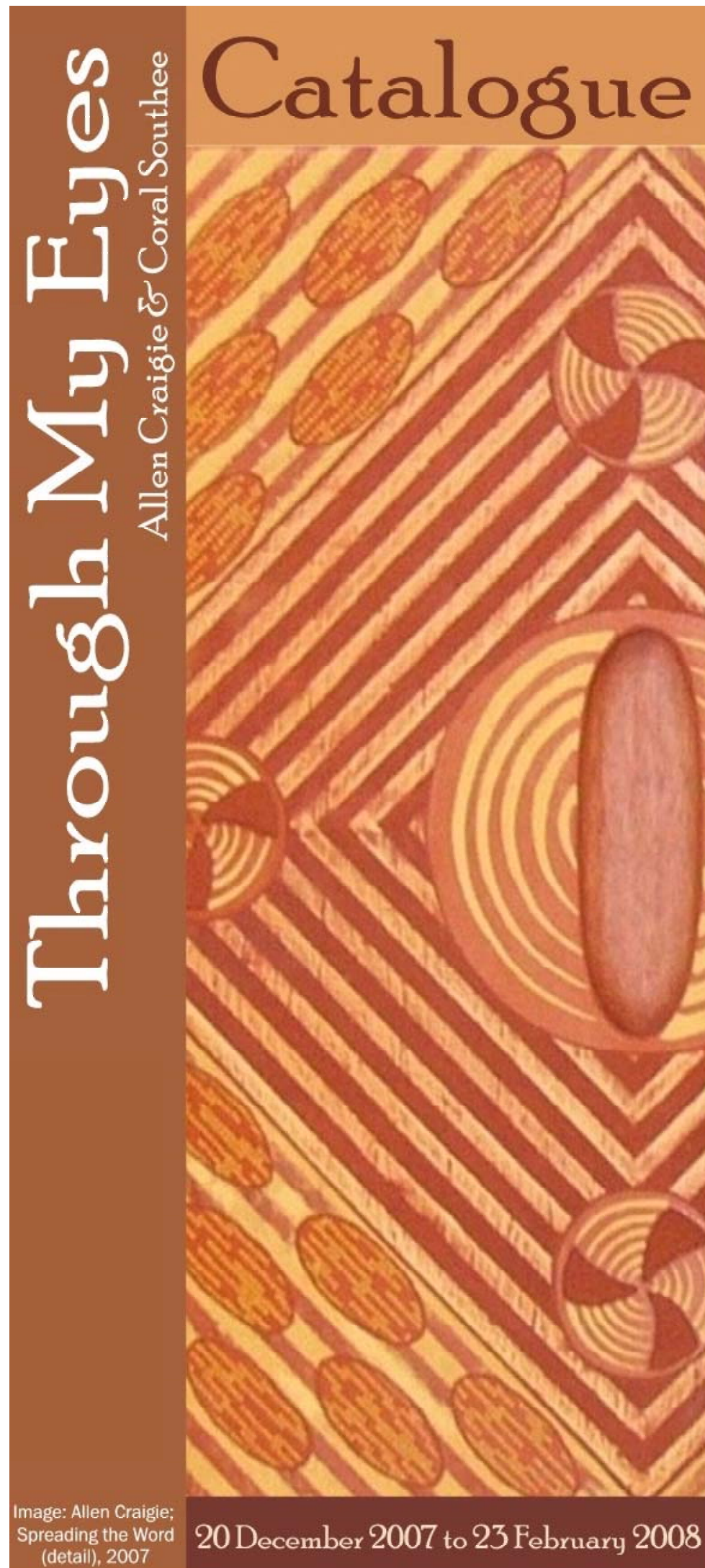


Image: Allen Craigie;  
Spreading the Word  
(detail), 2007

20 December 2007 to 23 February 2008



### 1. Desert Rain

Allen Craigie

900 x 1200 mm  
Acrylics & ochre on board

The desert is arid due to the lack of consistent rainfall. Even the mickeries (underground wells) can dry up. Therefore when the rain does arrive, it is embraced by the moisture-deprived landscape as it brings sustenance to the land and its inhabitants. The central wooden disc is a mickeri that has not dried up, and the painted circles are wells that will fill with the rainfall.



### 2. Call Of The Geckos

Allen Craigie

900 x 1200 mm  
Ochres on board

This piece was solely inspired by the geckos in my studio. They sit up with me as I paint at night, as they feed on the mosquitoes, moths, and flying ants. One particular night there was a commotion among them as if to say, "Paint me Al". I think they're cool little dudes.



### 3. Spreading The Word

Allen Craigie

1800 x 900 mm  
Acrylics & ochre on board

A word has gone out across the land through restricted regions and on to communities that need to know the word and then continues to spread onwards.

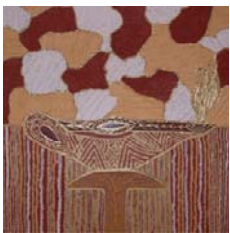


### 4. Amanda "My Cup Is Full And Running Over"

Allen Craigie

480 x 670 mm  
Acrylics & ochre on board

Amanda is a very close friend of our family. During a time of need she gave her time and support to us. Portrayed is a chalice which characterizes Amanda, being filled to overflowing. The contents of the urn, symbolize the blessings of God. The remarkable thing about this overflow is that it is not wastage, but in fact an excess which blesses those around Amanda. Thank you for being there Amanda.



### 5. Silja - "Let Your Light Shine"

Allen Craigie

480 x 670 mm  
Acrylics & ochre on board

Silja, our cousin, showed a special kind of support. She conveyed light, warmth and hope at a time where loneliness, brokenness, fear and darkness could have easily prevailed. The vessel characterizes Silja, the Holy Spirit is oil in the lamp and the light is Christ Jesus, our Lord. Thank you for being there Silja.



### 6. The Target

Coral Southee

1200 x 600 mm  
Acrylics on canvas

If you keep your eye on the mark, you will succeed.



### 7. The Breaking Message

Coral Southee

600 x 1220 mm  
Acrylics and timber on board

This piece represents how I see the current situation regarding the breakdown in several areas of the Aboriginal culture. I believe that the tradition of passing on knowledge orally has been eroded by many causes. The "message stick" centered in the piece is indicative of the "oral" tradition. Coming away from the message stick is twine, which represents the information that is entwined into certain areas of our culture and tradition. These twines are unraveling at different rates due to the loss of information and support for the Aboriginal culture due to a variety of reasons. Most are barely intact and are nearly broken, and some are unraveled to the point of breaking indicating areas where some customs are rarely shared or are nearly all but gone.

Message Stick – A carved piece of wood containing messages passed from one clan to another. Usually they would contain important information that needed to be shared as soon as possible.

Twine – Representing the strength of the Aboriginal culture. When all the strands are intact, the twine is very strong, but when there is a broken strand, there is a weak point. Unless the twine is replaced, it will eventually unravel and be wasted.



### 8. Tropical Rain - "God's Promise"

Allen Craigie

900 x 1200 mm  
Acrylics & ochre on board

This painting is a depiction of a time when I drove through a rainbow during a winter's gentle sun shower in New South Wales. A large body of fresh water could be seen through the Australian native trees that stood tall and proud along the side of the road. Every tree acted as a facet reflecting a myriad of colours. The bright crisp colours were filtered with the sunlight through the foliage. I believe that the rainbow is put there by God as his covenant between man and every living creature.



### 9. Water Life

Coral Southee

600 x 800 mm  
Acrylics on canvas

Although all these creatures are different and have their own defined habits and lifestyles, they all co-exist together as nature intended without wreaking havoc in their environment.

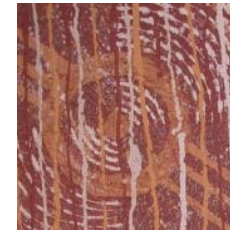


### 10. Living In Harmony

Allen Craigie

900 x 1200 mm  
Ochre on board

Being a placid creature, the turtle can live together in large numbers in perfect harmony. Through my eyes, they are not violent, they don't envy, and they don't think of life outside of their waterhole, unless drastic measures require them to do so.



### 11. Passing Of Knowledge

Allen Craigie

Various  
Ochres on board and terracotta

Representation of the passing down of knowledge from generation to generation. Some knowledge is lost and cannot be redeemed. The pot is the new generation reaching up to receive the knowledge.



### 12. Barra In The Mangrove On The Incoming Tide

Allen Craigie

1200 x 600 mm  
Ochres on board

For me, fishing is a good way for my mind to relax. Like painting, it is a release of tension. Fishing does require skill and knowledge which comes through many long hours of effort. To make a catch while fishing is an added bonus. To me the Barramundi is the epitome of fishing. It is a warrior in our estuarine systems and is definitely a prize catch.



### 13. Linked To Our Culture

Coral Southee

400 x 510 mm  
Acrylics & ochres on board

Depicted in the background of this piece are links of chain. They represent the bond we have to our culture. Although this bond is not visually evident, it is there and always will be. The land is an integral part of our culture and we will always be linked to it. The hands on this piece depict the presence of the people and the ochre signifies the land which it has come from.



### 14. Beneath The Surface...

Allen Craigie

990 x 1280 mm  
Ochre on board

There are times in life when it can feel dry and hopeless. In a place where you shouldn't be, you hide behind the surface, where you are less noticeable. If we just take the time to look to our left and to our right, we would realise that we are not alone.

FACT: 1 in 6 men have suffered from depression.