

## MR GLADSTONE REVISITED

GRAGM Staff  
and Volunteers

### Gladstone Regional Art Gallery & Museum

Established in 1985, GRAGM is a community cultural initiative of the Gladstone Regional Council. Dedicated to promoting art and heritage, for and by the communities of the Gladstone Region and Central Queensland, GRAGM acts as a focal point for the preservation and display of the region's history and cultural heritage.

The heritage-listed former Gladstone Town Hall and modern O'Connell Gallery are linked by a glass bridge walkway purpose-built to accommodate the 19th century marble statue of the region's namesake, William Ewart Gladstone. Mr Gladstone revisited features images projected on the statue, visible from Goondoon St, hosted each evening from 6pm until midnight.



The 19th century marble statue of William Ewart Gladstone, housed at the Gallery & Museum.

Image courtesy of the Gladstone Regional Art Gallery & Museum collection

## GLADSTONE REGIONAL ART GALLERY & MUSEUM

FREE ADMISSION  
FREE WIFI

Cnr Goondoon & Bramston Sts, Gladstone Q 4680

Open 10am to 5pm, Monday to Saturday, public holidays as advertised

A community cultural initiative of Gladstone Regional Council

Phone: (07) 4976 6766 Fax: (07) 4972 9097

Email: [gragm@gladstonerc.qld.gov.au](mailto:gragm@gladstonerc.qld.gov.au)

Website: <http://gallerymuseum.gladstonerc.qld.gov.au>

Facebook: <https://www.facebook.com/GladstoneRegionalArtGalleryandMuseum>



The Regional Arts Development Fund is a Queensland Government and Gladstone Regional Council partnership program to support local arts and culture

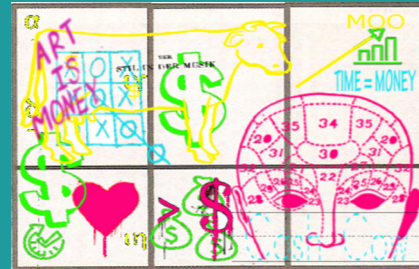


## BUY MY ART BEFORE I'M DEAD

Felicia Lloyd

109 Goondoon Street, Gladstone

Tertiary qualified Felicia Lloyd has an extensive arts practice in the Gladstone Region including solo exhibitions, facilitating art workshops and developing community art projects in the Gladstone Region. An experienced commercial photographer, landscape designer and art teacher, she has artworks in a number of private, corporate and state collections including the QLD State Library.



Buy My Art Before I'm Dead, neon chalk, Felicia Lloyd (2015)

Image courtesy of the artist

Neon chalk markers text and symbols illuminate the way artists develop conceptual responses in creating an artwork. Economy, financial value and monetary systems are featured, including statements about the value and expense of art, highlighting artists and their community role. The work considers art within the context of the industrial hub Gladstone Region with presence, impact and social worth. Imagery and text written in reverse and mirrored creates the impression that the viewer is inside looking out/outside looking into the artists mind, or perhaps seeing the concept of making art about art from a different perspective.

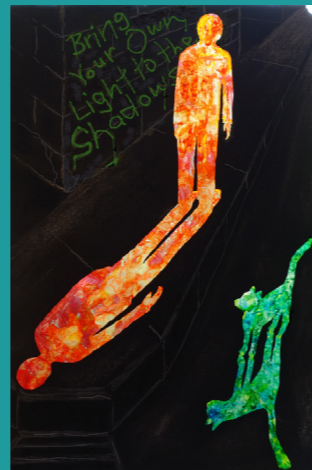
## SHADOWS OF LIGHT

Jenny Fournier

113 Goondoon Street, Gladstone

Popular children's art tutor Jenny Fournier is well known for her animated sculptures, including Frolic for Animating Spaces 2014 and custom trophies for the Capricorn Film Festival. Jenny is a proven up-cycler incorporating metal and polymer-clay in her designs. She also draws and paints often utilising stencils and aerosols.

Within the dark some shadows are actually things of beauty such as the light and colourful shadow cast by a blue or green bottle. Imagine if people and animals were transparent, perhaps the colour of their shadow would match the colour of their soul. A person standing behind you wouldn't 'cast a shadow over you'; the colour of their shadow would simply blend with yours forming new colours. Maybe then we could bring more light and colour to the world instead of more darkness. Let's bring our own light to the shadows.



Shadows of Light, aerosol, card, plastic and found objects, Jenny Fournier (2015)

Image courtesy of the artist

## REFERENCING SHAKESPEARE

Beryl Wood

Miriam Vale Library

With her arts practice beginning 20 years ago, Beryl Wood has exhibited in several venues including Gladstone, Brisbane, Sydney and in the United Kingdom. Her public art projects include SUNfest, Harbour Festival Street Parade entries, Goondoon Street and Gladstone Aquatic Centre mosaic. Founding a local theatre group early in 2000, Beryl and the group produced 25 plays at the Gladstone Entertainment Convention Centre.

A strong beam of light to passes through the apertures in a replica of the Hamlet skull, onto a reflective surface to enlighten Shakespearean texts referencing the International Year of Light, during Referencing Shakespeare.



Referencing Shakespeare, Mixed media, Beryl Wood (2015)  
Image courtesy of the artist

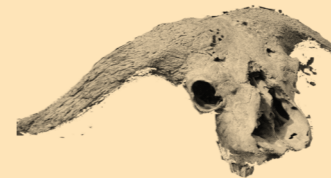
## COMING BACK TO LIFE

Karen Swift

Miriam Vale Community Centre

Karen Swift (b. Scotland) graduated from a Bachelor of Science in Fashion Design and Manufacture at Heriot Watt University, Edinburgh. Living and travelling throughout the world, she came to Gladstone in 2012 and became an active member of Creative Gladstone Region Inc, a founding member of Crow Street Creative and set up her own business Squidgy Art and Design Pty Ltd.

An exploration on how light interacts with our environment and changes our perceptions of space, depth, and colour. To explore how it can bring life to static objects from the early morning sun to our need to bring colour alive in the darkness with technology based lighting.



Coming Back to Life, Karen Swift (2015)  
Image courtesy of the artist

## TOP SECRET MEETING PLACE

Madeleine Cook with  
Sarah Robertson in conjunction  
with Gladstone Arts Council Inc.

Mt Larcom Rural Transaction Centre

A University of Queensland Bachelor of Arts degree led Madeleine Cook to explore arts and culture locally, nationally and internationally during the 2014 Bite the Big Apple! Arts & Cultural Management Tour, New York. Currently working towards a Diploma in Graphic Design, Madeleine has collaborated with Sarah during Artist Windows.

Street art and neon sculpture by artists such as Bruce Nauman, Dan Flavin, Lauren Bon, Joseph Kosuth, Claire Fontaine, Jung Lee and Tracey Emin, have inspired this urban invasion. Audiences will discover the message unexpectedly, evoking curiosity. "Whether such a meeting place is necessary or even exists", will be followed by the fast realisation of the iconic joke. The artists hope the work will bring enjoyment to the onlookers and create a unique community talking point.



Top Secret Meeting Place, fairy lights on MDF board, Madeleine Cook and Sarah Robertson (2015)  
Image courtesy of the artists

# GLADSTONE REGION ARTISTS WINDOWS

Saturday 12 December 2015  
to Sunday 31 January 2016

### VENUES:

Agnes Water Community Centre	Calliope RSL	Gladstone Regional Art Gallery & Museum
Boyne Tannum Community Centre	Civic Centre, Gladstone	Miriam Vale Community Centre
Calliope Administration Building	109 Goondoon Street, Gladstone	Miriam Vale Library
Calliope Library	113 Goondoon Street, Gladstone	Mt Larcom Rural Transaction Centre

An initiative of Gladstone Regional Council supported by the Gladstone Region Regional Arts Development Fund (RADF), a partnership between the Queensland Government and Gladstone Regional Council to support local arts and culture in regional Queensland.

# WELCOME



Creative Regions Director Rod Ainsworth led a project development workshop for local artists to develop their art writing practices. (Image: D Paddick)

Gladstone Region artists have embraced the chance to work collaboratively in this series of locally created artist window displays. Hosted across the Region in Gladstone Regional Council venues, offices and libraries, the event is presented in conjunction with the 2015 International Year of Light and Light-based Technologies.

Artistic windows have a long tradition within the cultural sector. From Salvador Dalí's 1939 Surrealist window displays for Bonwit Teller that shocked shoppers, to Sidney Nolan's early years with Abbotsford's Fayrefield Hats and more recent times, where Japanese artist Takashi Murakami has created windows for Louis Vuitton. The opportunity to reach an audience at any time of the day is both enticing and challenging for creative enterprise.

To get the local project started, Creative Regions' Director Rod Ainsworth led an informative project proposal workshop at the Gladstone Regional Art Gallery & Museum, where participating artists gained new skills in developing and writing about their creative plans.

With the 2015 Year of Light theme in mind, the artists set about designing their installations, working together to provide a diverse collection of artworks and leading to Region-wide visual extravaganza for all to enjoy.

We welcome this fantastic chance to explore community windows as innovative exhibition spaces. This is a great opportunity to enhance the participating artists' professional practices and to showcase the extraordinary talents of local artists for the wider community.

Please enjoy this celebration of public art and we hope these Artist Windows inspire many wonderful community discussions, now and well into the future.

**Jo Duke,**  
Curator, Gladstone Regional Art Gallery & Museum

## WHAT REALLY MATTERS

Daren Dunett with  
Belynda (Bindi) Waugh

Agnes Water Community Centre

As a musician and Stage & Lighting Technician, Daren Dunett has developed a designer flare. Coordinating the Gladstone Marina Stage Four Play concert and Animating Spaces 2014 With Light presentation, Daren is passionate about bringing people together to appreciate the arts. Introduced during Artslink Queensland's Animating Spaces 2014, Daren and Bindi have collaborated again through two Artists Windows works.

*We can be driven by consumerism, often told there are many things we must possess to be happy and successful. The core items we must have are represented by the inner Perspex cylinder and those items we are told that we need are reflected in the outer Perspex cylinder. Do not lose sight of what really matters.*



What Really Matters, Perspex cylinders, Daren Dunett (2015)  
Image courtesy of the artist

## REFLECTIVE TUBES

Lidia Godijn

Boyne Tannum Community Centre

Renowned for her textile works, Lidia Godijn practices the traditional technique of loom weaving, together with stitching and embroidery. In contrast, she also works expertly in digital technologies.

*These handwoven tubes are created with a variety of materials. Whilst the warp is made of either silk or cotton, the weft features recycled materials mainly rag industrial work shirts, craft wires, silk, cotton. The reflected material woven into the tubes, catches the light at different times of the day.*



REFLECTIVE TUBES, Mixed media, Lidia Godijn (2015)  
Image courtesy of the artist

## MORNING, NOON AND NIGHT

Rosemary Anderson

Boyne Tannum Community Centre

Award winning local artist Rosemary Anderson has been painting and creating installation art, since 1988. Her experiences living and travelling extensively in Australia and overseas, as well as attending many Flying Arts Alliance workshops, have provided great inspiration. Well known for her sculpture, Rosemary's professional practice includes teaching in a variety of media such as stone and paint.



Morning, Noon and Night, Mixed media installation, Rosemary Anderson (2015)  
Image courtesy of the artist

*The Morning, Noon and Night series features recycled bike wheels, stained glass and coloured clear glassware from op shops. Pale blues, purples and pinks threaded and glued into the spokes of a silver painted wheel represent the morning light. Noon features a larger bike wheel painted red-gold, with elements in reds, yellows and oranges. Night is painted black with dark glass of purples and blues.*

## THIS IS ART

Sarah Robertson with  
Madeleine Cook, in  
conjunction with  
Gladstone Arts Council Inc.



THIS IS ART, fairy lights on MDF board, Sarah Robertson and Madeleine Cook (2015)  
Image courtesy of the artists

## Calliope Administration Building

Gladstone Arts Council's Sarah Robertson has attained Bachelor of Fine Arts Degree with Distinction. An experienced local art teacher, her recent international internships at Saatchi Gallery and October Gallery in London have driven her creativity to new heights. Sarah has teamed up with Madeleine Cook to present two Artist Windows projects.

*Contemporary art is often judged harshly by viewers who claim 'that is not art'. With this in mind, the artwork re-appropriates this thought by telling them the opposite. The artists hope the irony and humor will bring enjoyment and create a unique community talking point.*

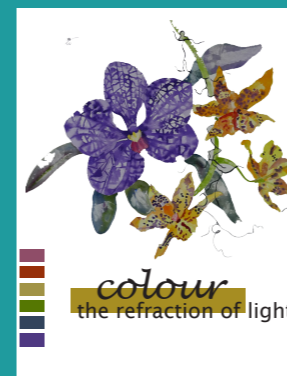
## COLOUR - THE REFRACTION OF LIGHT

Margaret Worthington  
and Clive Rouse

Calliope Library and Miriam Vale Library

Collaboratively working as designer/artists/fabricators with paintings and private commissions, Margaret Worthington and Clive Rouse often utilise cutting edge technology in their work. Reflecting a sense of place in educated, research based site specific artworks, they incorporate industrial metals and often acknowledge an environmental component to their work. Bright, colourful and whimsical, a sensitive viewer may find the smallest details.

*A series of colourful cut out vinyl decals inspired by Margaret's watercolour paintings and printed using innovative printing techniques. Each letter in the text Colour - the refraction of light follows the colours of the rainbow. The artists researched that light radiates from luminous objects, always travelling in straight lines and the white light we see is made up of the seven different colours of the spectrum: red, orange, yellow, green, blue, indigo and violet.*

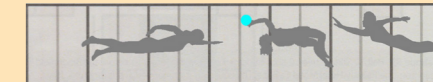


Colour-the refraction of light, adhesive vinyl, Margaret Worthington and Clive Rouse (2015)  
Images courtesy of the artists



## LIGHT CAPERS

Kristel Kelly with  
Jenny Fournier



Light Capers, cellulose tape and found objects, Kristel Kelly (2015)  
Image courtesy of the artist

## Calliope Library

With a strong commitment to community arts, Kristel Kelly and Jenny Fournier have worked many years with local arts group, Creative Gladstone Region Inc. Kristel's expertise in Social Media shone brightly during Artslink Queensland's Animating Spaces 2014 when Kristel coordinated more than 20 artists during her By the Pool project.

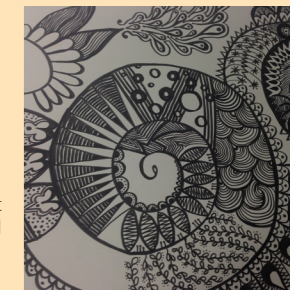
*Inspired by people playing in the summer sun, Light Capers features a series of suspended swimming and playing figures. These hollow, translucent figures are created utilising a clear packing tape technique, with solar powered string light features. A visually appealing display at night or on overcast days, equally during the daylight, the figures will have a silvery appearance.*

## MANDALA ART

Janie Petersen

Calliope RSL and  
113 Goondoon St, Gladstone

Whether she's photographing, creating mosaics or illustrating a children's book, Janie Petersen is always practicing her creativity. "Art is my life. I create every day – no matter if I feel up or down. Through my work, I love inspiring other people to unlock their creative energy."



Mandala Art, Janie Petersen (2015), water based paint and chalk  
Image courtesy of the artist

*Creating a mandala is something that I cannot plan ahead or design in advance. Each is a reflection of the moment, revealing a mirror image of my inner peace. I can see beauty in each and every one of them and I love the honesty of a mandala. I often start by planting a seed in the centre and then working my way out using either very simple or highly detailed patterns. For these Artist Window installations I am working directly onto the glass using white chalk pens or a white wash of paint symbolising the light.*

## SHADOW FIGURES

Belynda (Bindi) Waugh  
with Daren Dunett

Civic Centre, Gladstone

Multi-award winning local artist Belynda (Bindi) Waugh has developed an arts practice over many years, working in a variety of media. Her public art works are featured in Mt Morgan, Hillclose Clinton, Library Square and East Shores Gladstone. Introduced during Artslink Queensland's Animating Spaces 2014, Bindi and Daren have collaborated again through two Artist Window works.

*Each one of us casts a shadow. When you look at my shadow you cannot tell my race, my religion, my age or any of the other things we often judge people by. Imagine if we all were to step into the LIGHT and turn and look behind us. In those shadows let us find those things that really matter. Let us TRUST. Let us have FAITH and let us seek PEACE. Let us recognise TRUTH and let us find FAMILY.*



Shadow Figures, six 1.8 metre painted MDF board figure shapes. Small lights encircle the head area and within the body an area of applied text, Bindi Waugh (2015)  
Image courtesy of the artist