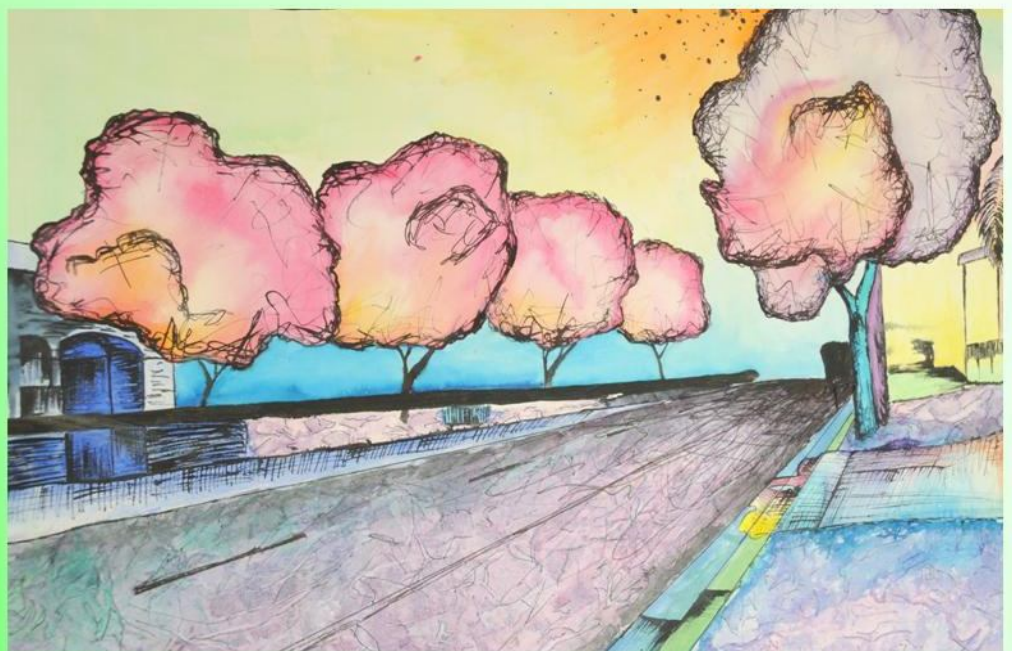


16 Annual Golding Showcase

Port Curtis & Callide Valley Youth Art Exhibition

2010



Street Lights 2 detail, by Jaimee Abbay, People's Choice 2009

Catalogue



Gladstone Regional Art Gallery & Museum
Cnr Goodoon & Bramston streets, Gladstone
Ph: 49766766 Email: gram@gladstonerc.qld.gov.au
www.gladstonerc.qld.gov.au/gallerymuseum
Open Monday-Saturday 10am-5pm



57

Stephanie Louise Lehmann

Biloela State High School Year 12

Perceived Power of Position

This piece is representative of the mask that can develop in the presence of a belief in the power to heal. A doctor's skill is based in their hands therefore the power that is encompassed in the skill acts as a mask, and a certain god complex develops.

440mm

Mixed media

58

Georgea Lewis

Biloela State High School Year 12

Enlightenment

Enlightenment in an electrical installation that comments on the power of an individual both alone and within a group. When the single translucent bulb is illuminated it does not generate as much light as when all of the bulbs are glowing. This demonstrates that individuals possess more power within collaboration. The interactive element allows viewer to experience this idea of collaboration first hand enhancing their own enlightenment.

2000x1200x1200mm

Mixed media

59

Bryce Wade Linnane

Biloela State High School Year 12

Skateboard Photography

Photos taken at local skate park. Photos were edited using photoshop.

225x1010mm

Photography

60

Charissa Kirk

Biloela State High School Year 12

Peek-a-Boo!

The work is a playful representation of the idea of multiple perceptions. The idea that the world is made up of many different things and no one person will see or interpret them the same way.

1530x1230mm

Mixed media

61

Kiara Deeth

Biloela State High School Year 12

Snow Leopard

510x400mm

Mixed media

62

Catherine Brooks

Biloela State High School Year 12

Beauty of Cania

While taking a leisurely stroll around the local Cania Gorge National Park I was inspired to capture its natural beauty with my camera. All pictures included are of simple plants and mushrooms that are often over looked. By using a small f.stop number the focus point is mainly on the plant, not its surrounding area. I have done this as I believe that all of the small plants and objects in an environment all add up to make the overall beauty.

470x800mm

Photography

63

Anthony Davis

Biloela State High School Year 11

Leviathon

An exploration of pixelisation inspired by Chuck Close's beyond real portraiture, this painting of a friend Levi Turner aims to capture realism through capturing a moment and a facial expression.

1000x850mm

Acrylic on canvas

64

Libby Cooper

Biloela State High School Year 12

Make Air, Not War

Make Air, Not War was designed to target the area of playing air guitar to air for world peace. The idea of each individual collaborating with the next through this simple action produces the idea that individuals, when combined have the power to influence the outcomes of greater problems.

1300x4000x600mm

Mixed media

65

Libby Cooper

Biloela State High School Year 12

Witch Children

This collection of masks was designed to target the issue of African witch children. These children were labelled as witches and in turn were tortured, banished and in extreme cases killed by African pastors in an attempt to cleanse them.

3000x2500x500mm

Clay

66

Chelsie Voss

Biloela State High School Year 11

Headress

510x410mm

Mixed media

67

Ashley Horwath

Biloela State High School Year 10

Blackbird

1000x450x500mm

Metal

86

Zachary Van Itallie

Biloela State High School Year 12

Parallel Universe

Parallel universes employ the notion of a theoretical set of multiple feasible universes. Together they comprise everything that exists. Authors such as T.S Elliot & J.W Dunne have experimented in such philosophical concepts with their writings.

590X500mm

Acrylic on canvas

24

Georgia-Rae Fraser

Chanel College Year 11

Portraits of women in war - The Boer War

This photo shows an at home wife, waiting for her husband to come home. She treasures his image and she trembles thinking of what he is facing. This is a deliberately blurred image.

600x900mm

Photography

25

Mitchell James Hackett

Chanel College Year 11

Set the Planet Free

The theme was internal/external environments. The inspiration of the environment gave me the idea of the earth being put in a cage by humanity, and the earth is screaming set the planet free.

550x590x590mm

Mixed media

26

Marii Gaughan

Chanel College Year 12

ArachnoPHOBIA

This work focuses on the feelings and emotions people show when they have a phobia, in particular arachnophobia.

840x1110mm

Photography

27

Rachael Macgregor

Chanel College Year 11

Lest We Forget

With the focus on the past wars I chose this work to depict powerful images to evoke memories of past Australian involvement in past wars. This is a culmination of past events. Photographs show memories but what has remained is Australia, intact as a democracy, with many fallen heroes whom we remember.

600x500mm

Collage, paint on canvas

28

Sarsha Markovic

Chanel College Year 11

The Roof of Conflict

This artwork is a representation of war. The tree symbolises the roof of war & conflict. By making the tree menacing it creates a feeling of terror & hopelessness.

1200x1000mm

Acrylic, glue, collage & varnish on canvas

30

Natalie Short

Chanel College Year 10

Dramatic Mask for musical The Monsters of Frankenstein

Our design brief was to make promotional Frankenstein masks for display. Mine was to be worn like a hat not a face mask.

210x170x150mm

Paper mache

31

Jayden Andersen

Chanel College Year 10

Dramatic Mask for musical The Monsters of Frankenstein

Our design brief was to make decorative wall or wearable masks for a school musical promotion. However the production decided to use make-up instead.

250x180x160mm

Paper mache

32

Danielle Wales

Chanel College Year 10

Mask for dramatic arts musical The Monsters of Frankenstein

This mask is for a mannequin for "The Frankenstein Monsters Show" to promote the show.

330x230x150mm

Paper mache

33

Gemma Derboben

Chanel College Year 10

Mask for musical The Monsters of Frankenstein

My mask is designed to fit a mannequin as part of promotional material for the school musical.

300x190x160mm

Paper mache

34

Lachlan Day

Chanel College Year 12

Kubel Ross Stages

The works are photo's to represent stages of depression according to Kubel Ross. The expressions on the subjects along with the feelings in the colours of the eyes give off one of the seven stages. Blue meaning acceptance. Red meaning anger.

500x500mm

Photography

35

Lauren Greenaway

Chanel College Year 10

Dramatic mask for musical The Monsters of Frankenstein

My head mask for our musical for school Term 3.

300x170x30mm

Paper mache

36

Joshua Harper

Chanel College Year 10

Helmet Head Dress

In wearable art I made a head-dress like a helmet.

260x220x240mm

Paper mache' card paint

37

Amelia Keefe

Chanel College Year 11

A Moment of Peace

This is my own definition of peace & anti-war movement in response to "life's moments & remains".

600x500mm

Mixed media

38

Rachael Anderson

Chanel College Year 12

Drawings - Wolf-Deer

These drawings go with my body of work on memories & remains. The dream-weaver from North America (Indian culture) reflects the memories of dreams about their animals in the North America wilderness & their relationship to man, culture & environment.

720x720mm

Pencil on paper

39

Micaela Oost

Chanel College Year 10

The Monsters of Frankenstein

Our design brief was to design & make a head mask using paper mache'. The mask was to be used in promotion.

180mm

Paper mache

40

Khia Whelan

Chanel College Year 11

War: Before & After

This work reflects the before & the after of war. Done on canvas, the pictures of war are sewn onto the canvas to symbolise the need to stitch their lives back together after the war. The first canvas is a collage of men leaving to war & saying goodbye. It is stitched together with grey thread symbolise peace & a neutral life. The second canvas is stitched in red, to symbolise blood & loss. In the corner of each artwork there is a poppy, symbolising the wars.

530x530mm

Mixed media

41

Micaela Oost

Chanel College Year 10

Creative headdress for wearable art

This wearable art work- headdress is for Melbourne Cup- designed.

540mm

Mixed media

42

Rachael Macgregor

Chanel College Year 11

Horrors of War

My artwork explores the theme of war through collage. The work shows that there are no positive sides to war, but only negative. War is ripping peace apart. Humans mainly want to live in peace. There should not be any more wars.

500x600x18mm

Mixed media

43

Megan Hughes

Chanel College Year 12

Window to the Future

This artwork represents the destruction of the environment by industry. The squares are the windows that show how the environment will be destroyed by industry & the colour around it expresses pre-industrial revolution when nature ruled.

variable

Fabric

45

Casey Louise O'Reilly

Chanel College Year 11

The Desolation of War

Focusing on the effects of war. I decided to make my painting about the pain & suffering that humans feel when they are subjected to war & manifest, this is a neo expressionist style of Rauschenberg and Picasso.

600x500mm

Mixed media on canvas

48

Mitchell Hackett

Chanel College Year 11

Effects of War

With the focus & the technique of collage used to create this work. I chose to portray the effects of past wars. It was a learning experience to learn in more depth what actually happened. It is different from the current "War on Terror" or Afghan/Taliban war we are currently involved in.

400x500x20mm

Mixed media

49

Kimberley Brown

Chanel College

Migrant Mother

"Migrant Mother" was inspired by the work of Dorothea Lange an American photographer. My mother was also a migrant. Australia is the subject matter of this work.

560x800mm

Digital

50

Rachael Jane Anderson

Chanel College Year 12

Night Terrors

This artwork is about insomnia & links line with my two drawings of the wolf & deer.

600x600x40mm

Acrylic, shellac on board

81

Khia Wheelan

Chanel College Year 11

Extinction is Forever

Extinction is forever & with climate change, population explosion, land clearing for agriculture & development. Australia has more endangered species than any other country in the world. Each label represents an endangered species I know about. If it's too late for the Tasmanian Tiger, what else will we lose forever unless we are aware & do something about it. By creating awareness people become proactive & help to save habitats. It is not too late to get involved & help NOW.

280mm

Mixed media

83

Chantel Sismey

Chanel College Year 11

Innocence of War

450x450mm

Watercolour on canvas

44

Sarah Upton

Chanel College Year 11

Hat for Peace

I chose to make my wearable art headdress in the name of peace. Pink is a colour that creates harmony. The words are glued onto a recycled plastic piece of hat. The multi-coloured peace symbol dominates the work. It was worn on Melbourne Cup day.

400x400x17mm

Wearable art

46

Annabel Dunphy

Chanel College Year 11

The Peace Makers

With the focus on war I chose to do the dove of peace & into this I collaged many images of the roles of women during past wars. Generally speaking women dislike war immensely so there are no winners except blade market profiteers & arms dealers. Too much pain and suffering.

500x400x10mm

Paint on canvas

47

Mitchell Hackett

Chanel College Year 11

War Memories

With the focus of war the technique of collage was used to create this work which shows the memories created by war & the remains. It is a reminder to our generation of what previous generations have had to endure. I chose powerful images to represent past events.

450x450x20mm

Mixed media

82

Emily Kathleen Ahrens

Chanel College Year 12

Clinging Additions

This design focuses on the theme of addictions that cling to ones self. It explores through visuals of colour, material, shape and form and relates to the different types of addictions, how they are represented by the individual and how they affect ones image. The central type of addiction is the addiction to fame, it then branches out using the symbols and material to addictions to the body image, gambling, smoking, alcohol and drugs. The concept of "life's memories and remains" as addiction is just that, it creates life's memories and leaves behind their mark.

variable

Fabric

51

Rebecca Ann Frost

Gladstone State High School Year 11

Frightened to Speak

My artwork is about when a teenager is frightened to talk about how they are really feeling. For instance; when a student is under pressure or feeling anxious.

780x530

Acrylic and aerosol

52

Amy Coglan

Gladstone State High School Year 12

Fish in hands

This piece was painted for a unit call myspace. I painted a fish as main focus and our dam in the background because myspace is around our front dam.

670x970mm

Watercolour and pencil

53

Kiara Ingham

Gladstone State High School Year 12

Myspace

This work is representing my favourite places to go: being the country and also mixing with nature.

800x1040mm

Paint, cloth

54

Christina MacDonald

Gladstone State High School Year 12

My Time

These four portraits represent four influential people that affected me growing up. They include - Lady Gaga, Barack Obama, JK Rowling and Ian Thorpe.

1200x1200mm

Acrylic

55

Emily-Kate Mattingley

Gladstone State High School Year 12

Whaling Reflections

I've been photographing for two years with a main focus on nature - particularly snakes and macro work. I feel most at home behind a camera with nature in front of it.

710x520mm

Photography

56

Jessica Lee Evans

Gladstone State High School Year 12

Mother Earth

The tree is the mother of our earth. She shuts her eyes as she no longer wants to watch the destruction going on in the world. Industry has taken over the beauty of nature. She stands tall in hope that one day the land will be preserved & the beauty of the natural world will not fall for another skyscraper.

1220x230mm

Acrylic paint, texture paint on canvas

77

Brianna Leigh Thompson

Gladstone State High School Year 11

Floating Leaves

The branches of the tree portray youth's choices & the different paths they lead to reach our final beauty.

450x450x15mm

Acrylic on canvas

78

Brianna Leigh Thompson

Gladstone State High School Year 11

Summer Days

Youths love of freedom & relaxation at the beach on a hot summer's day.

450x450x15mm

Acrylic on canvas

29

Chloe Hall

Independent

Save our Reef

In my last term of year 12, I completed this work about the protection of the Great Barrier Reef - on the doorstep of Gladstone.

1370x1340mm

Wood, pvc, paint

75

Samantha Jade Roper

Miriam Vale Year 10

Optical Art

I enjoy creating optical art pictures, using contrasting colours.

400x280mm

Nikko pen

1

Ethan Lionel

Miriam Vale Sate School Year 10

Death Wish

I like the design of grim reaper & feel that I have the ability to draw it & that I am good at it & I'm very interested in artistic skills.

300x400mm

Fine-line 0.4 pen, pencil

76

Samantha Jade Roper

Miriam Vale State School Year 10

Windmill Silhouette

A watercolour wash with silhouette detail. Looking at the shapes that break-up the sunset sky.

400x280mm

Watercolour

2

Catherine Roberts

St Stephens Lutheran College Year 11

TLC

My artwork was inspired by a woman who my mother used to care for. One of her presents to our family was the tree that these flowers bloom upon. They were in bloom for the first time since her death six years ago. The words, Trust, Love, Comfort, are her highest values & she showed them all her life.

750x740mm

Mixed media

3

Toby Gray

St Stephens Lutheran College Year 10

Random

This artwork is an image about what is happening in my mind. The words don't have an apparent connection but the connection really is me. I believe this work shows me as an individual. You need to look deeper into the artwork to see the meaning which is similar to me. The Asian influence is purely aesthetic imagery but the words mean 'life over death'.

250x200mm

Ink on canvas

4

Sianna Choc

St Stephens Lutheran College Year 10

28107

In 2010 humans rely greatly on technology in daily life. Over time, certain aspects of life have become increasingly less important as special values change. This piece portrays an android girl with metal protrusions on either side of her head, a barcode on her shoulder & a broken, shattered eye that weeps oil.

300x250mm

Photoshop, acrylic

5

Byron Lupke

St Stephens Lutheran College Year 10

My Prison Life

My artwork represents a prison & my life. I sometimes feel like I live in a prison with the restrictions from my parents & school. It started off as an appropriation on Leonardo Da Vinci's 'Mona Lisa' and somehow turned into a self portrait of myself. The twigs and leaves represent my new environment 'Gladstone Australia' (as I moved here a year & a half ago from South Africa). The red, bloodshot eyes represent stress, blood and fighting. The clouds represent peacefulness.

500x400mm

Acrylic paint on canvas

6

Melinda Tracey

St Stephens Lutheran College Year 10

The outback

I appropriated my paintings from Monet's 'water lilies' as a part of an appropriation task in art class. I chose to change the scenery to the outback because it is a peaceful place where I can be free & be myself. It is an escape from reality & the pressures of school.

400x500mm

Acrylic on canvas

7

Andrew Vesey-Brown

St Stephens Lutheran College Year 11

Appropriate Appropriation

I chose to appropriate Mondrian because it was a minimalist style. The colours represent my Go-karting as they are my colours. I thought it be interesting to appropriate an idea of appropriation interesting & ironic at the same time.

450x450mm

Acrylic on canvas

8

Anonymous

St Stephens Lutheran College Year 10

IPod Rulz

I chose to do this piece as a reflection on how iPods are everywhere now- school, home, TV, libraries, everywhere. Basically this painting shows a mashed figure being "puppeteer" by an iPod. The music symbols represent the song being played. The smiles represent how everyone is happy with it.

250x200mm

Pencil (HB), acrylic

9

Brooke Alana Hudson

St Stephens Lutheran College Year 10

Window Pain

This is an appropriation of Mondrian paintings. I changed the colours in this artwork to represent different aspects of my life. I called this painting 'Window Pain' because by looking at the sharp points & sharp angles, makes me feel like it is painful.

900x600mm

Acrylic on canvas

10

Ruby Ellen Lawler

St Stephens Lutheran College Year 11

Mona- Lisa in Space

I appropriated the Mona Lisa by changing the background, clothing & facial features. I wanted it to be a funny, colourful picture, as opposed to the original serious Mona Lisa. So I decided to give her one eye like an alien. I added more aliens to the back ground to make it more out of space.

250x200mm

Acrylic on canvas

11

Caitlyn Jane Dick

St Stephens Lutheran College Year 11

Before the End

My artwork conveys a view of time, technology, change history, past, present & the future. I discover & take a journey through time & change creating an open mind for my audience. Through my piece I enlarged with dominant themes such as technology, the past, the present, future, in relevance to today's changing society. My passion towards my work is to show & express my feelings on today's society, in which I have tried to capture change & memories as my main subject.

600x600x70mm

Mixed media

12

Kirra Farrar

St Stephens Lutheran College Year 10

Reasoning

My painting is an appropriation of Vincent Van Gough 'A Starry Night'. I switched half of it into something like the Gladstone pollution issues with population & industry buildings. It destroys the night sky from beautiful & fresh to gross mixed colours. I did this to reason with people about pollution & the environmental issues in Gladstone

510x400mm

Mixed media on canvas

68

Jessica Barrett

Tannum Sands State High School Year 11

Rhythm of Nature

I enjoy working on photoshop. I wanted to capture a romantic musical quality in the girl so I used the contrast between colour & black & white to make her stand out more.

305x460mm

Photoshop, printed on canvas

69

Jennifer Louise Booth

Tannum Sands State High School Year 12

This work was part of a body a work related to the myth of Aphrodite. Through this body of work I explore aspects of the myth such as beauty & live. I found a quote summarised my feelings about love & incorporated it with the three drawings.

918x738mm

Pencil & paper

70

Samantha Hoseit

Tannum Sands State High School Year 12

Connectivity

This work is to represent how opposites can connect through a relating element. In this case Hades, the lord of the underworld, connects with love through the pomegranate, Persephone, the daughter of the nature god Deweter.

610x1010mm

Watercolour on canvas

71

Vicki Stegink

Tannum Sands State High School Year 11

"Connections & Pressures"

I have portrayed the objects within my room, 'my personal place' that I feel a close connection with. I have also tried to show the pressures of outside life-school etc. I want to be free in my space connected to what I like, but there are always pressures as well waiting for me.

400x550x20mm

Mixed media

72

Amanda Jane Meredith

Tannum Sands State High School Year 12

Mermaids in Watercolour

Our assignment was to paint a creature of mythology. I chose to paint mermaids & how they are seductive & innocent at the same time in modern art. Watercolours gave off the look I wanted & the style is a seductive & cute at the same time.

760x580mm

Watercolour on paper

73

Devdan Sidhu

Tannum Sands State High School Year 11

Imagination Land

This piece shows how my imagination changes the way I see the world & how it hides who I am. This is why I put the glasses on my face because it hides a lot of my face. I also tried to show how my imagination is created & how it gets destroyed, as a reflection of myself & my place in the world.

2150x1500mm

Pen, coloured pencils on paper

74

Luke Smith

Tannum Sands State High School Year 11

Characters

The characters I have depicted are characters I have drawn since I was much younger. These characters are part of my imagination, my 'self' & hold a special 'place' in my mind.

1080x900x500mm

Mixed media

13

Codie Edelman

Toolooa State High School Year 11

Laugh Til It Hurts

I copied other pictures out of tattoo books & put them all together onto one canvas & painted them.

900x900mm

Acrylic on canvas

14

Kristy Jane Robinson

Toolooa State High School Year 12

Seeing Yourself As Others May

I chose to make this collaborative work as a response to the school art program. The concept that was given was 'Breaking Boundaries". I chose to express this through the human eye; the act of scraping came from making an effort to change yourself. After experimenting with several kinds of impressionable media I chose to use oil pastels. Mostly because of the rich colours that could be used to express the eye colour.

1260x870mm

Oil pastel on paper

15

Rhedyn Duncan

Toolooa State High School Year 11

As War Rages On

This artwork expresses my anti views on war.

360x255mm

Photography

16

Rhedyn Duncan

Toolooa State High School Year 11

Hidden

This artwork expresses secretiveness and the contrast of facial expressions.

1050x1500mm

Photography

17

Rachell Watkins

Toolooa State High School Year 11

Splatter

I looked at splatters and water. The directions in which it flows.

260x400mm

Photography

18

Rachell Watkins

Toolooa State High School Year 11

I can't speak and I'm alone

I was looking at sexual abuse and how different people feel when they go through a traumatic experience.

960x1500mm

Photography

19

Sheree Samantha Munro

Toolooa State High School Year 11

Looking Rough

I was looking for ordinary structures that I wanted to make more colourful and see if I could make it look like it has different textures.

240x340mm

Photography

20

Sheree Samantha Munro

Toolooa State High School Year 11

Rusty Character

I took a photo of a corner of an old rusty building then played around with photoshop and really stressed the colours.

260x250mm

Photography

21

Bianca Michell

Toolooa State High School Year 11

Acceptance

This artwork is about acceptance and what happens when people become unaccepted and what I can do to someone.

1600x1080mm

Photography

22

Kristy-Lee Jane Fodriga

Toolooa State High School Year 11

Rainbow of Stain

After playing around with photography I Photoshopped some images and chose my favourite, with this being my favourite. It represents the works in every good thing after all not everything is perfect.

280x380mm

Photography

23

Rachel Skye-Leigh Gesler

Toolooa State High School Year 12

Life from a drip

When I work with Indian inks I am reminded of the childhood that I once lived, and realise that it is a never ending journey that we know will end someday but unsure of exactly when. I began my piece by simply placing ink onto a piece of paper and blowing it with a straw, and watching the way it branched like a tree and ended with a very light line that disappears with no warning. After playing with a few different colours and taking photos of the work, I wondered if I could improve my images by photo shopping them. When people view my work, I would like the art work to fill their heads of wonder to make them ask questions to find more answers for the reason behind the mess that appears on the page in front of them.

3700x2850mm

Photography

79

Chantelle Fitzpatrick

Toolooa State High School Year 10

The Kneeling of Shame

This photo was taken at Toolooa State High School for an assignment.

290x420mm

Photography & Photoshop

80

Chantelle Fitzpatrick

Toolooa State High School Year 10

Wonder of Cassie

I took this picture at school of my friend last term for a school photo assignment & thought it looked nice, so did my art teacher.

420x290mm

Photography & Photoshop

84

Lachlan Kelly

Toolooa State High School Year 11

Spinning Out Of Control

Playing with paint at the pottery wheel. No control sometimes, like life.

800x400mm

Paint on canvas

85

Adriana Mills

Toolooa State High School Year 11

What do I remember

250x570mm

Paint on board

87

Kelsey Rae Gordon

Toolooa State High School Year 10

Dragonflies at Dusk

Inspiration was from a photo my dad took of a dragonfly sitting on our palm tree after a late afternoon storm.

920x610mm

Acrylic on canvas